

DESFASE HOUSE

Surrounded by mountains, 'Desfase House' is inspired by nature itself in a geometric way.

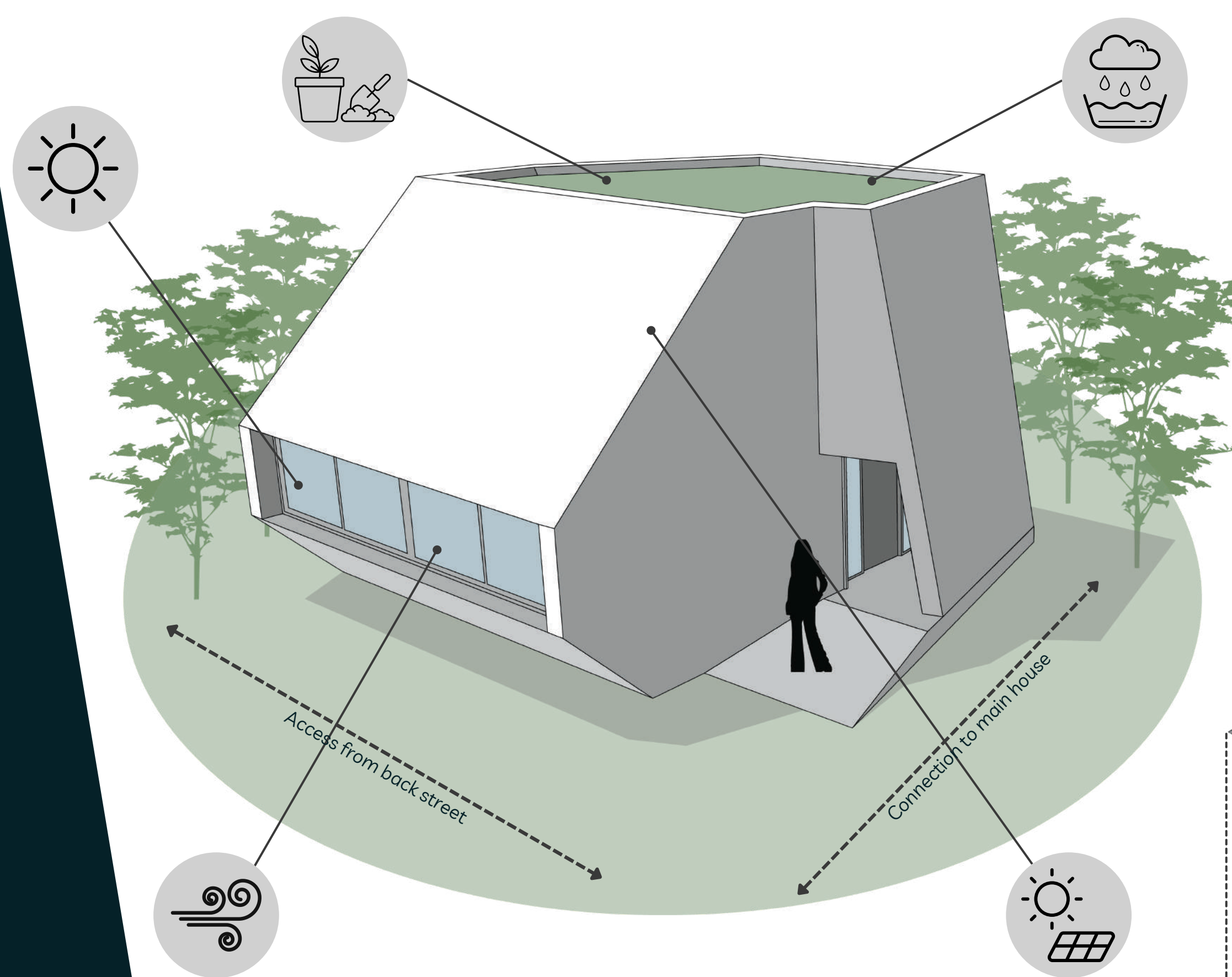
Despite of its small size, the building's shape provides an space that encapsules all the needs to live whit a sense of sobriety, modernism and comfort.

It also seeks to incorporate sustainable solutions which would help the owner's finances and the environment, both on the long term.

PROBLEM STATEMENT

The designed house will be located in Nelson, BC, Canada, and placed as an independent secondary house beside a main one. Due to this, the project must stand by the requirements given by the municipality.

It is also important to have in mind that weather changes drastically through the year from season to season: while summers are warm, winters can be snowy.



SUSTAINABILITY

- Recyclable materials
 - Exposed concrete
 - Bamboo
 - Steel
 - Glass
- Local resources
- Solar energy
- Natural heating and ventilation
- Rainwater collection system
- Gray water recycling

PROGRAM ORGANIZATION

TOP LEVEL

- Roof garden

LEVEL 2

- Bedroom

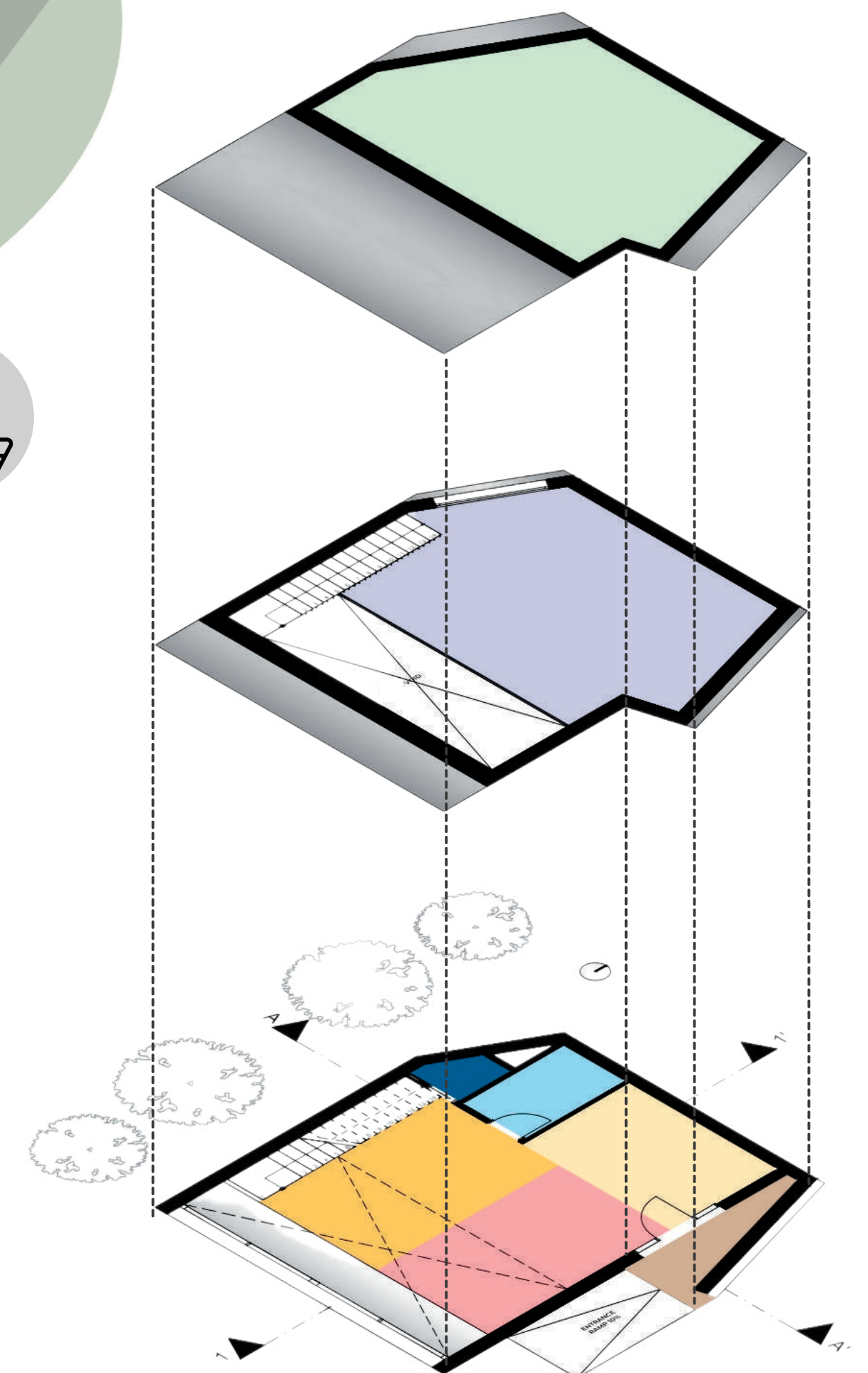
LEVEL 1

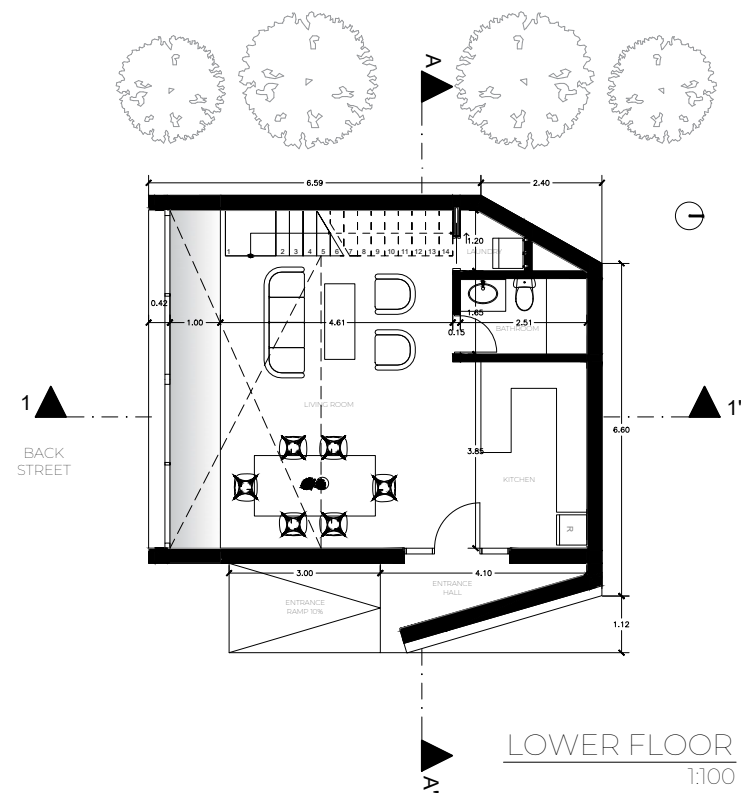
- Covered entry
- Dining room
- Living room
- Bathroom
- Open kitchen
- Laundry

MAIN CONCEPT

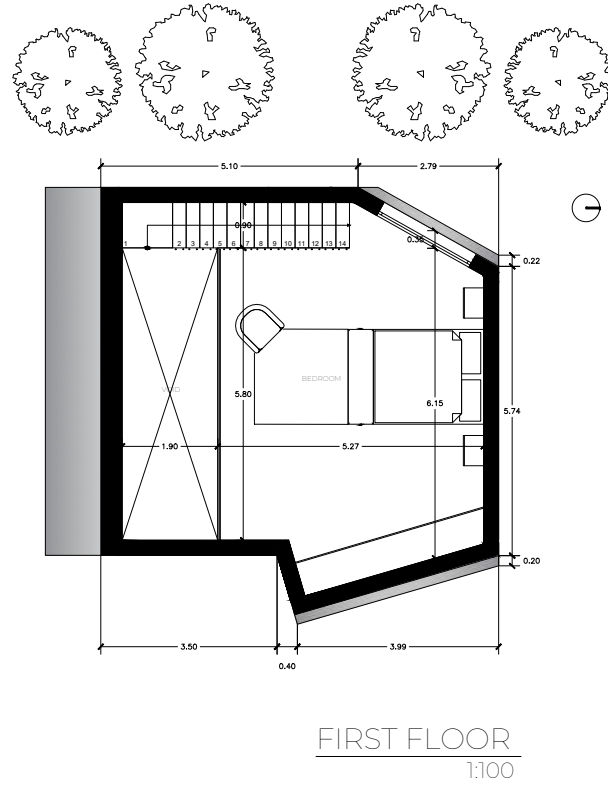
The geometric concrete monolith carries social areas in the ground floor, with a double-height space in nearly half of the floor to ensure the place feels bigger. Private areas are kept on the level above.

A roof garden is placed on the top level, serving as a rain water collection system.

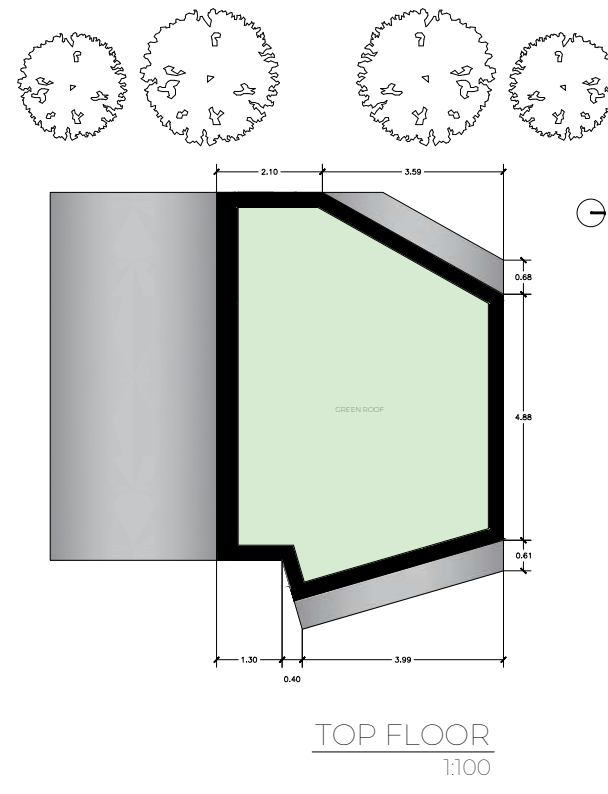




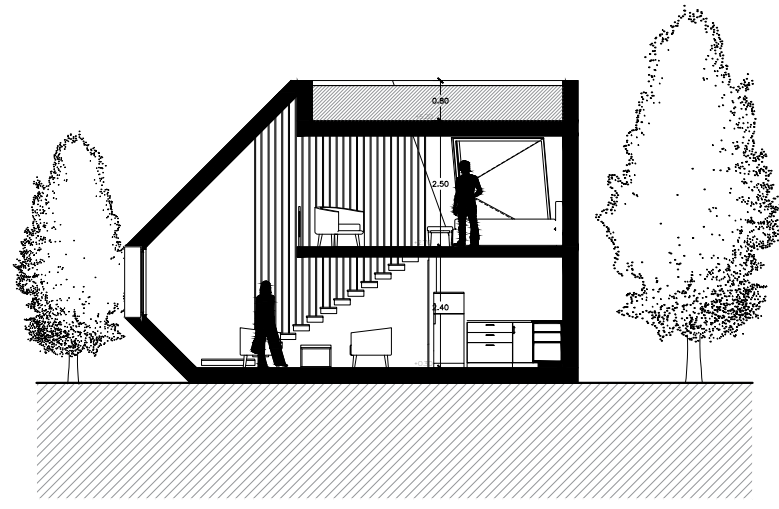
LOWER FLOOR
1:100



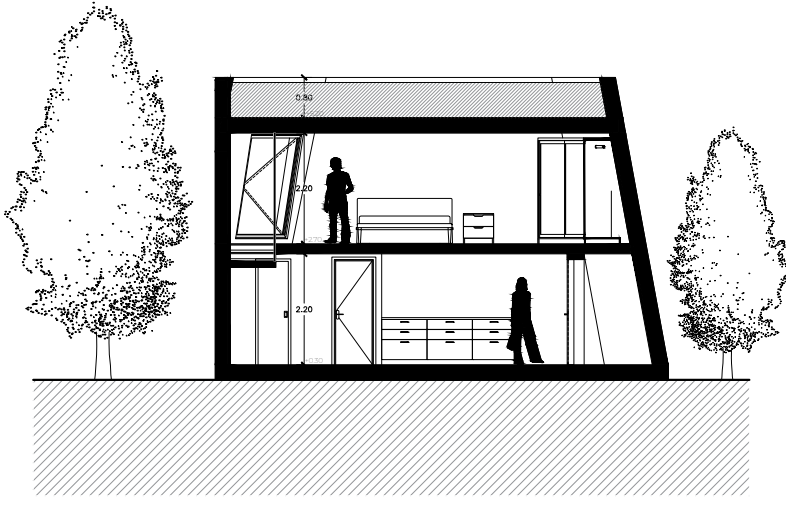
FIRST FLOOR
1:100



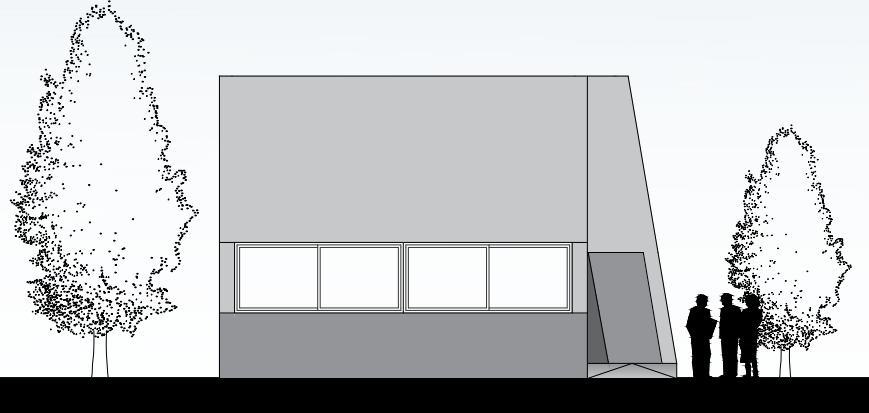
TOP FLOOR
1:100



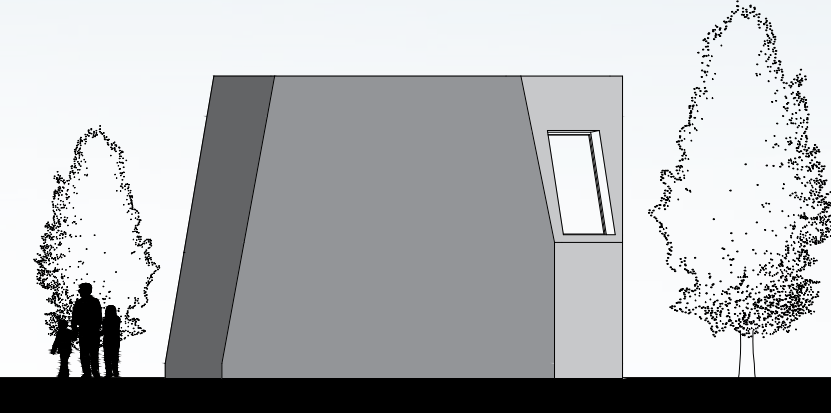
SECTION 1 - 1'
1:100



SECTION A - A'
1:100



NORTH ELEVATION
1:100



SOUTH ELEVATION
1:100