

# MY LITTLE DREAM HOUSE

LOCATION: Nelson BC Canada  
AREA: 710.80 sq. ft

## CONCEPT

Focusing on an individual homes, I planned my home according to my need and requirements and my interest including the study room, multipurpose room and adding the separate spaces for pets. Design the plan and selected the materials according to the site references, climates.

## PLAN DESCRIPTION

A main entrance to the East firstly leading to a Living Room layouted with 5 seater sofa, a coffee table, console table and a fire heater. A furniture with multi-functional uses which included in 3 seater, and 2x1 seater sofa can be used a bed as well. Since Canada have cold climate, there is the use of fire heater to heat up the room. Bathroom with wall hunged commode, basin and a shower. A shoe rack attached in a wall having a sliding door to open and close it. Then a Kitchen/Dining having a fridge, gas range, chimney, different storage furniture and island with sink and using as a dining. Living room and kitchen is double height. A multipurpose room include different activities which can be used as a formal dining spaces or study spaces using a multifunctional furniture or can be a spaces for music area which I like most as I am the music and instrument lover. The store can be used below the staircase. Being a pet lover, I have introduced the aquarium below the staircase as well. From multipurpose room, there is a exit door. Beside the staircase is a laundry area including washing machine (dryer and washer), sink, a furniture storing different equipments. Coming to the mezzanine floor, there are bedroom and office/study spaces. A double size bed with 2 bedside table, a closet, Tv and cabinet. In study area, there are cabinet, armchair, wall hung furniture, etc. A furniture with a hidden underneath lighting provides an aesthetic scenario during night time. During daytime, skylight and vertical sliding window can be used as ventilation and lighting. Since the maximum number of window in the South facade it help for passive heating.

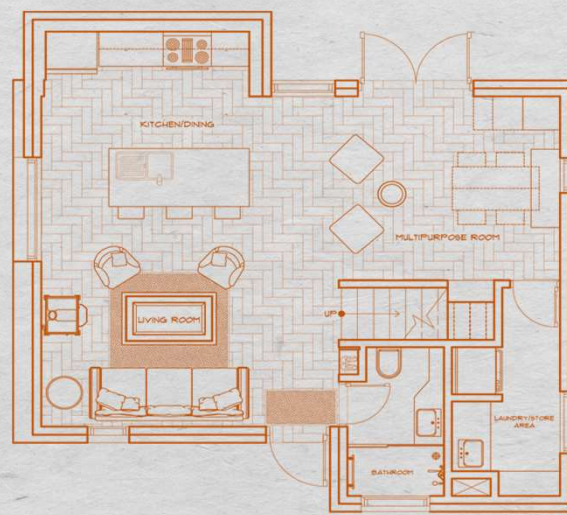


Fig: GROUND FLOOR PLAN

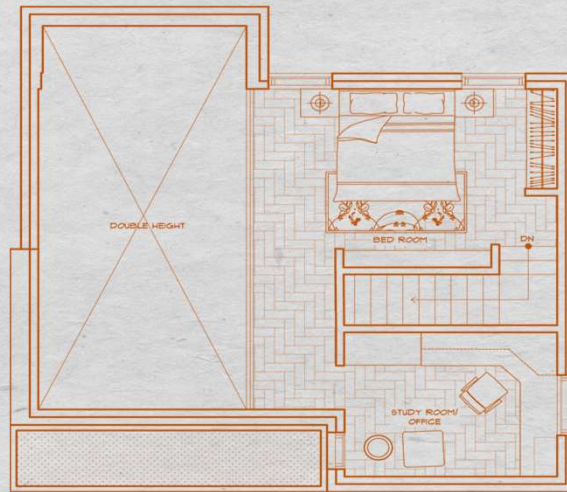
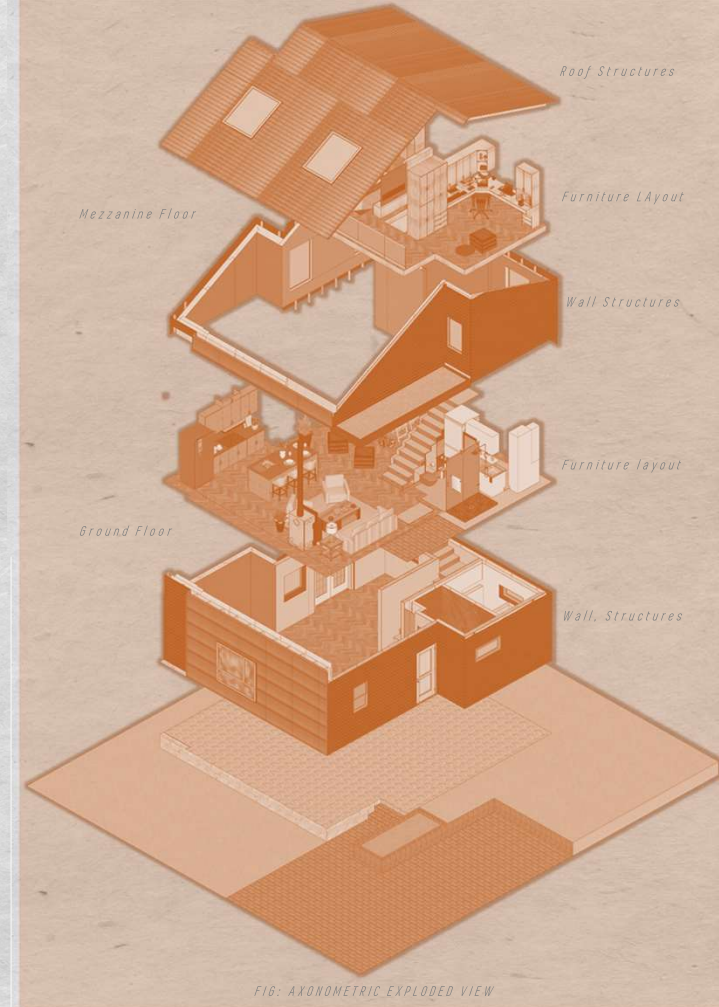


Fig: MEZZANINE FLOOR PLAN



## CONSTRUCTION PROCEDURE

Setting out the drawing plan into the land. Setting the wall Permacon Hollow Concrete Block up to 28 inch plinth lvl. To the exterior face of the block stone cladding is laid.

Then CLT wall is set which is precastly made with hollow for doors and windows. CLT is a strong, tough, light-weight material with good performance in an earthquake. Because of its lightweight frame, a CLT structure isn't likely to collapse as heavily on inhabitants during an earthquake compared to those made entirely of steel or concrete. Tyvek Homewrap is sealed in the CLT wall as it reduces home energy bills by controlling air flow and water intrusion, which helps insulation work better, allowing the HVAC system to work more efficiently. Then 2 inch x 2 inch vertical batten is nailed. Black cedar shiplap cladding is nailed at the top at first then with the male and female joints, the cladding are connected. It is done from ground floor to the mezzanine floor. The window are double glazed as it is highly insulating, meaning that HVAC systems do not have to work as hard to maintain a temperature inside the room. It needs to use less energy to achieve the same outcomes, saving that output and lowering the impact on the Earth, better light filtering, ice and hail storms during winter and spring, which can wreak havoc on thinner windows, having double pane fixtures can help your home weather any storm.

Same in the roof, CLT, Tyvek Homewrap, Battens are used and for covering shingles are used so it protect a house from most weather elements and are leak-resistant.



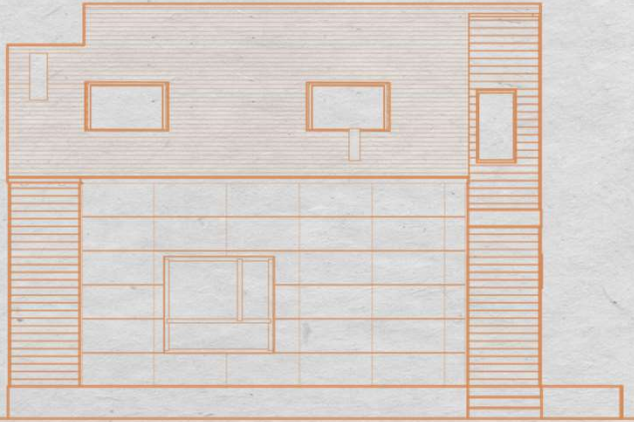
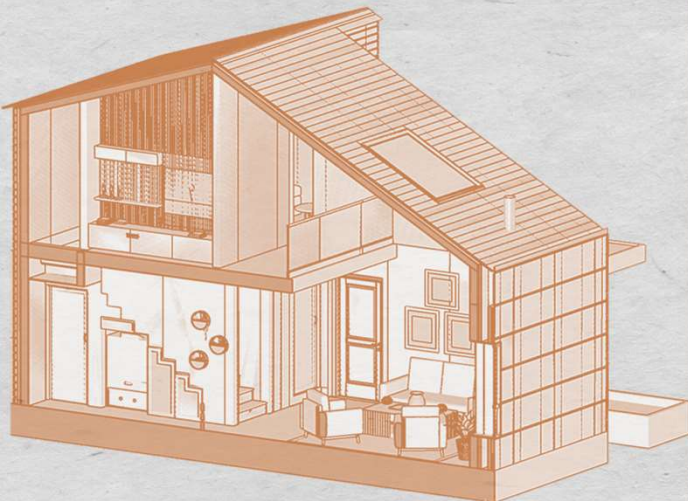


Fig: SOUTH ELEVATION



Fig: WEST ELEVATION



## MATERIALS USED INTERIOR



WOODEN PARQUET FLOORING



PAINTS

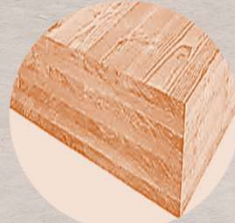


GREY PORCELAIN FLOOR TILES

## EXTERIOR



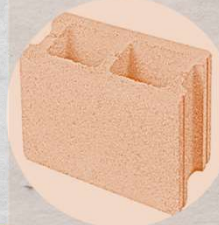
BLACK CEDAR SHIPLAP TIMBER CLADDING



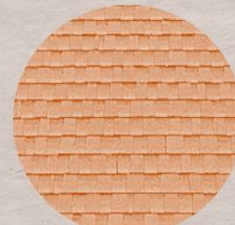
CROSS LAMINATED TIMBER WALL CLADDING



TYVEK HOMEWRAP



PERMACRETE HOLLOW CONCRETE BLOCK



SHINGLES



STONE CLADDING

## COLOUR PSYCHOLOGY

Mostly added cool colour that are seen in the nature like green, blue, etc. with warm colour like orange and.

others like grey and black colour.

Orange in living room, multipurpose room provide happy, energetic, excitement, enthusiasm, Warmth, wealth prosperity, Sophistication, Change, Stimulation.

Grey in study room, office is neutral, timeless, practical.

Green in kitchen is natural, cool, growth, health, envy, tranquility, harmony, calmness.

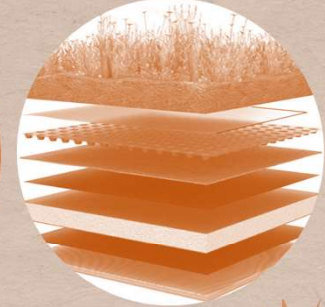
Blue in bedroom is calmness, serenity, cold, uncaring, wisdom, loyalty, truth, focused.

Brown shows reliability, stability, friendship, sadness, warmth, comfort, security, natural.

## NATURE INVOLVED



AQUARIUM



GREEN FLAT ROOF

Being a nature lover, added some natural elements in my house, aquarium, and plants, succulents and hanging plants. Want to feel like being in the nature inside the room.



FIG. MULTI-FUNCTIONAL FURNITURE