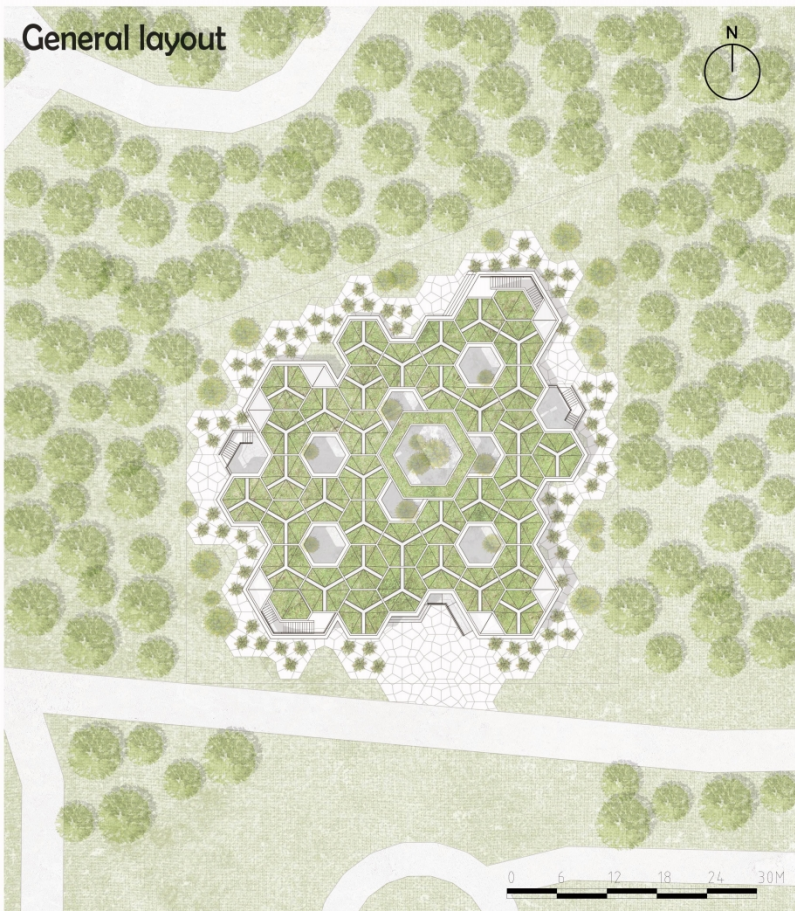
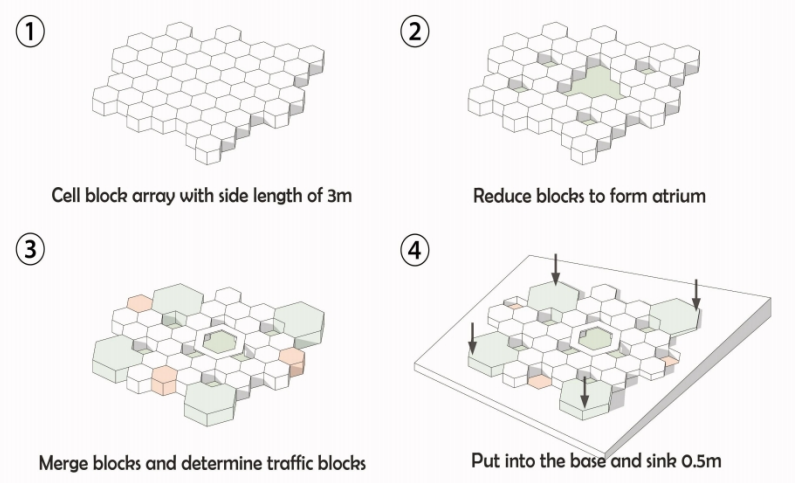


Nature Inspired Youth Centre

Honeycomb architecture coexisting with nature

The purpose of the project is to design a landscape architecture that coexists with nature. In the form, it is generated by the change of honeycomb geometry. The roof is covered with green plants to integrate the building with the surrounding scenery. On the facade, the parts exposed to the ground mostly adopt the design of metal skin covering the glass curtain wall, and the underground parts are wrapped with concrete walls, so that the building has the change of virtual and real. The rich spatial changes inside the building, combined with the light entering the atrium and the roof, bring rich light and shadow changes to the interior. Through the integration of natural landscape, it can bring healing activity environment to teenagers.

Block generation





Axonomic explosion diagram

① Planting roof

The planting layer has a slight inclination, which gives the roof a sense of fluctuation without affecting the activities of teenagers on it. There are symmetrical glass openings between the roofs of each unit to help indoor lighting and temperature flow.

② Metal outer skin

The shape of the outer skin of the metal mesh is similar to the shape of the roof. Its main function is to create a light and shadow effect while shading and beautifying the facade image.

Combination mode:

③ Glass curtain wall

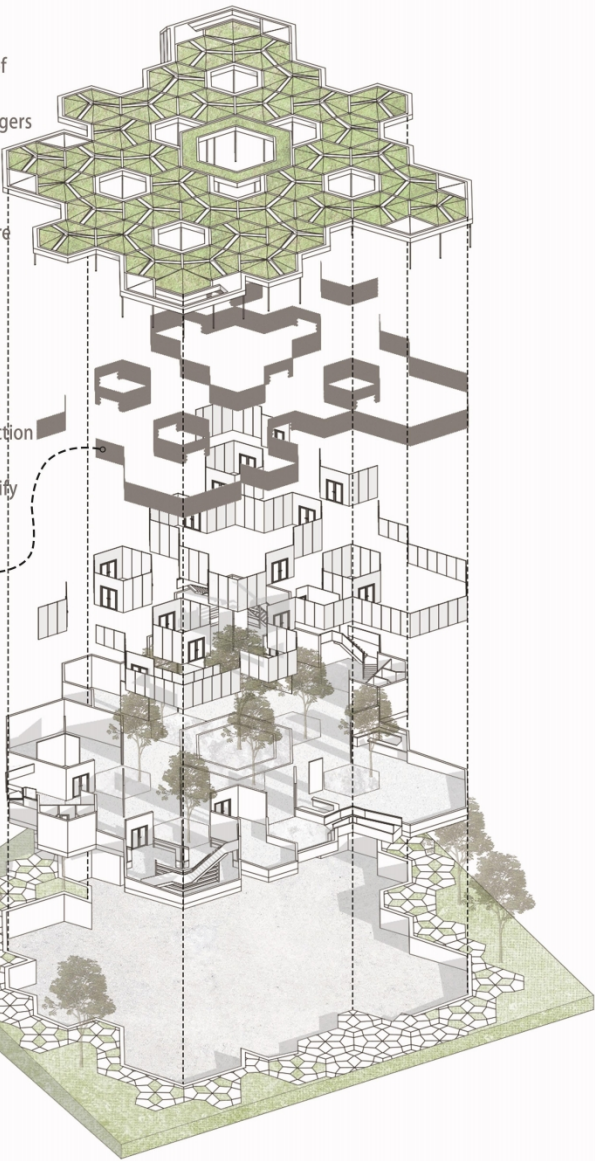
Create a transparent visual effect for the facade.

④ Concrete wall

Provide structural support, and the part under the ground acts as a retaining wall.

⑤ Base and paving

The ground pavement is to cut the hexagon into Thiessen polygons, and create the effect of color splicing through material changes and local greening.



Nature Inspired Youth Centre

Repeated hexagonal unit blocks form an interesting interior space

In graphic design, the four large blocks carry the main functions - reading, communication, sports and catering, which are based on the main psychological and physiological needs of teenagers. Other unit blocks are scattered with some auxiliary functions and rest spaces. The addition of large and small atriums not only increases the lighting, but also enriches the monotonous space.

Sectional perspective



Plan

- | | |
|-----------------------|---------------|
| ① Vestibule | ⑥ Gallery |
| ② Office | ⑦ Greenhouse |
| ③ Reading room | ⑧ Gym |
| ④ Toilet | ⑨ Coffee |
| ⑤ Communication space | ⑩ Dining room |



Reading room



Dining room

