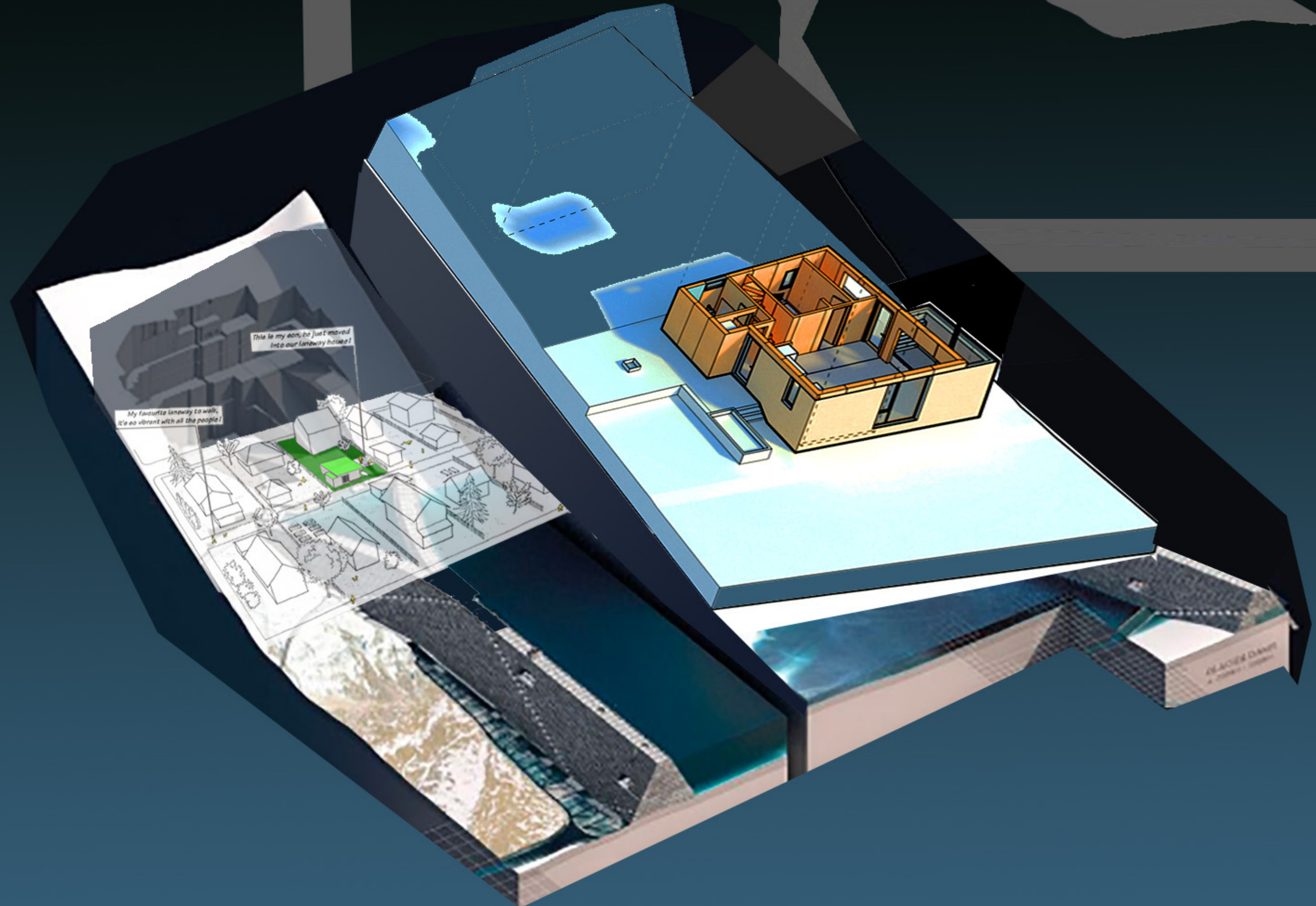


**Open Call:**

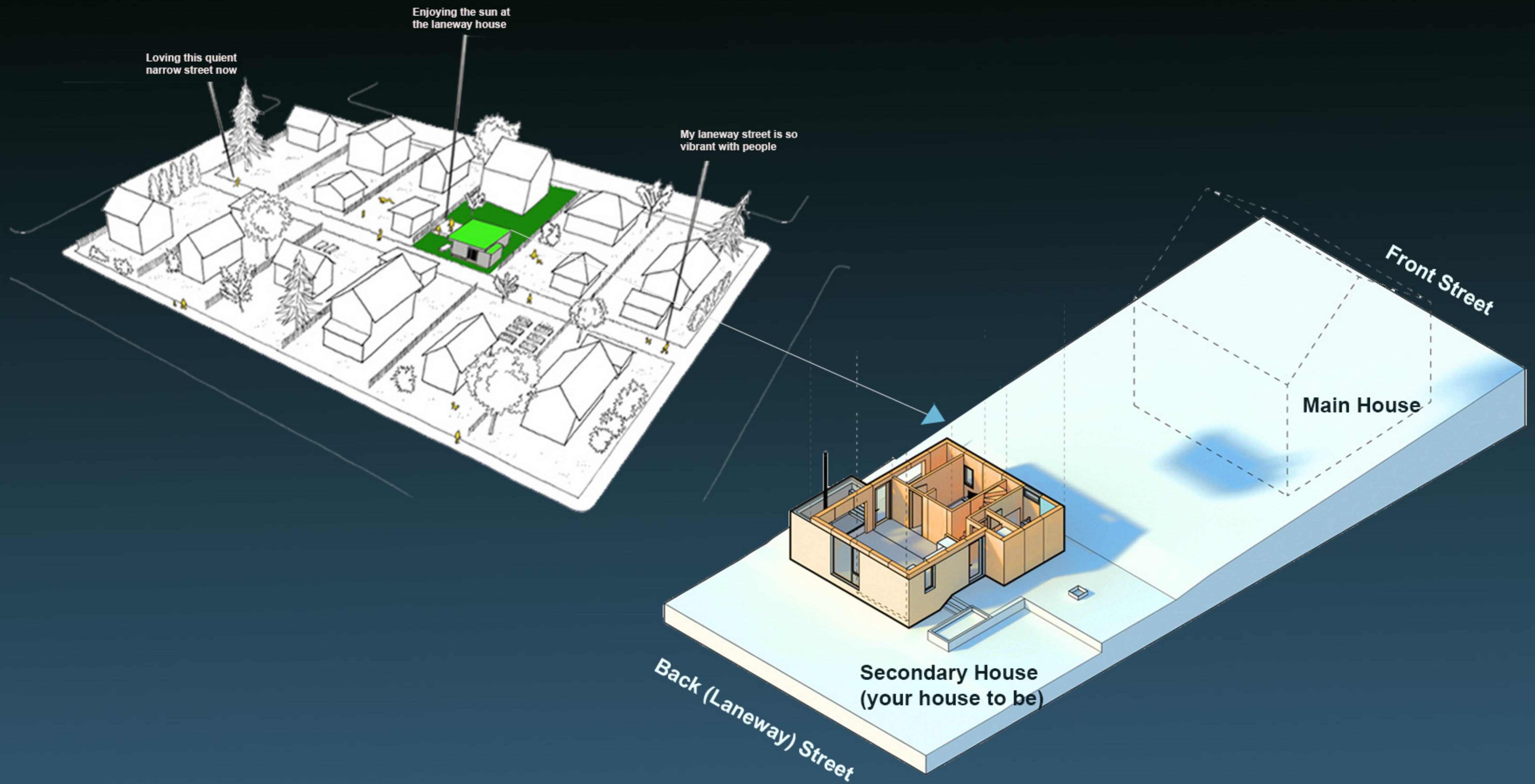
# MY LITTLE DREAM HOME

Design is a form of pure self-expression when done correctly, and has a way of transforming our environment into something inspiring. Imagine a scenario where you are given the opportunity of designing a small house to be yours for 10 years. In this design challenge, you are having the freedom of imaging and generating genuine ideas for your home on a specific lot. This home fits perfectly your needs, beliefs, hobbies, and lifestyle, all with an ambiance that keeps you motivated. We sincerely look forward to seeing your creation of a new small architecture that reflects you and maybe your generation! Express yourself and your world in the formation of a new architecture that will be part of your life.





Let your imagination take you as far as it can towards the house of your dreams. The house is to be on a specific lot owned by your parents (Or you). Your house will be a secondary house beside the main one. It is your chance to bring all your thoughts as a creative mind to design a little home that reflects your needs and tastes as a person and designer. Submit your most innovative work !





## The Project Scenario

You live in the city of Nelson, BC, Canada. Your dream home will be built in this city. Nelson is a city located in the Selkirk Mountains on the West Arm of Kootenay Lake in the Southern Interior of British Columbia, Canada.



**How cold does Nelson BC get in the winter?**

Average minimum and maximum temperatures vary from -5C to 5C (12F to 41F) in winter, 15C to 27C (59F to 80F) in the summer.

Rainfall averages around 25 mm (. 98 in) a month March through October. Snowfall occurs November through March with December and January averaging 70 cm (27.5 in) each.

City of Nelson has around 11,000 people.

## Space Requirements

No specific requirements for the spaces or activities of this house. Everything including the spaces and the levels to be made to fit your needs and hobbies.

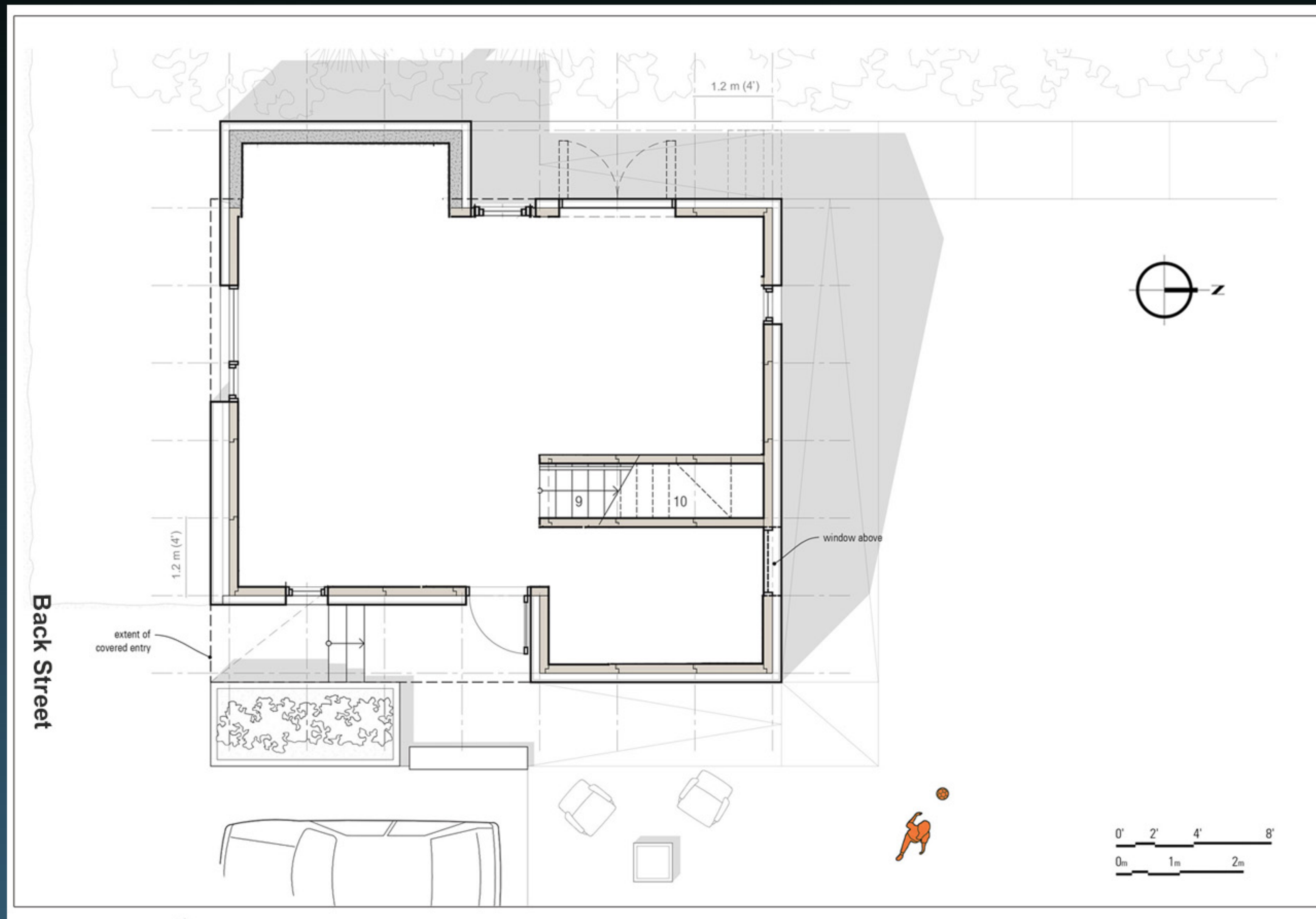




## City Policy

The municipality where you live published a pre-reviewed plan to direct homeowners of what can be built as a secondary house and to explain the requirements for the house setbacks (Meaning the setback from the boundary). The plan is shown below.

The lot is facing 2 streets, a main wide street, and a narrow back street. Your house is facing the back narrow street as shown in the image. The city has restrictions and allowances for secondary homes as explained in the next page.





## Restrictions:

-You should stay within the boundaries of the given plan (not bigger). The given plan has a grid of 4' (1.2m) by 4' (1.2m) to communicate the scale. Keep the plan boundaries the same without any changes.

-You are allowed to add a loft (upper) floor that doesn't fully cover the downstairs floor area. So, part of the floor is opened to the downstairs, like a mezzanine floor.

The loft is not to be more than 80% of the ground floor.

-The maximum height, for both floors, is 19' if the roof is flat and 22' if the roof is sloped.

-It is up to you to keep the stair in the same place or change its location.

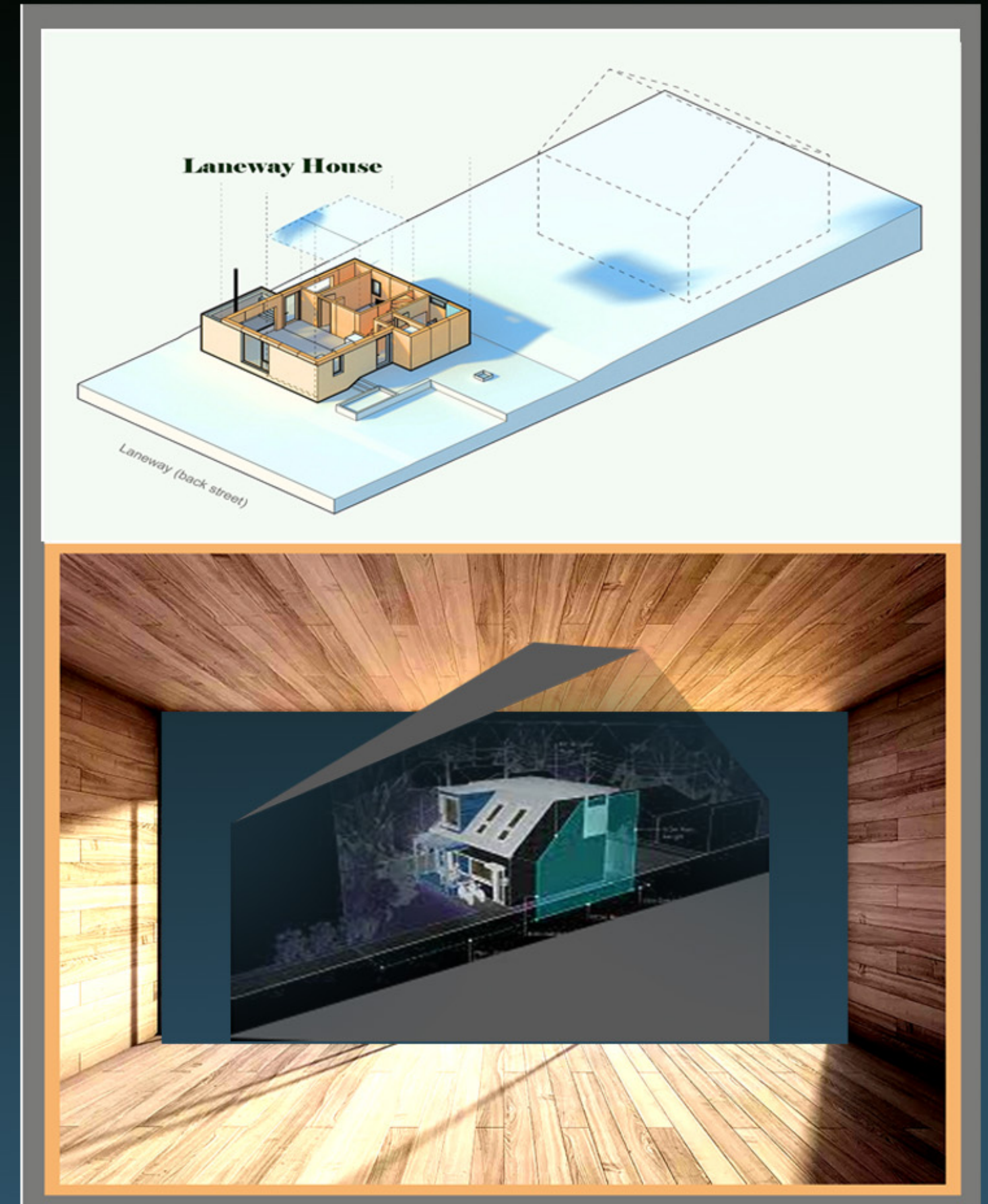
-The interior walls are just a suggestion from the municipality. You can design the inside based on your needs.

-You access the house from the back street.

## Success:

Success in this project will be measured based on genuine and rational ideas to express your needs.

The design is expected to be space efficient and feels big in spite of being small. The size of your secondary house not to compete with the main house.





**Competition Rules:**

ArcACe Award is an Open Call that invites established and emerging designers to conceptualize and propose exceptional ideas.

Registration deadline 28th September 2022

Submission deadline 28th November 2022

Registration fee for graduates: \$30

Registration fee for Students: Free

You can work individually or in groups up to five people

**Prizes:**

First Place Winner \$200

The first 5 winners: will be featured in the magazine and given certificates

Contact [info@arcace.ca](mailto:info@arcace.ca) or social media if you have any questions

**Submissions:**

Submissions to include plans, interior and/or exterior elevations, 3D graphics. All presented on 2 sheets of A2 size (landscape-oriented). Provide a brief concept description.

Include your registration number within the file name.

No need to write your name.

Use the registration number you receive when you apply to submit

If your registration is not accepted we will let you know

