



## INTRODUCTION

With the increase in population and lack of open spaces, down sizing to tiny houses is requisite. The tiny house community designed here aims on providing modern living spaces while maintaining a connection with the nature. In a world of urbanization and life being vulnerable to social media, the off-grid tiny house community builds connection among the populous. Parting from the generic concrete jungle construction, sustainable pre-fabricated housing interrelates the residents with the essence of nature.



## PLANNING

The planning focuses on division of public, semi-public and private spaces.

From the entrance, the three spaces are equidistant yet segregated while maintaining a cohesive movement.

The plan of each dwelling unit within the cluster rotates at right angle from the central axis to ensure that the approach of each unit has seclusion.

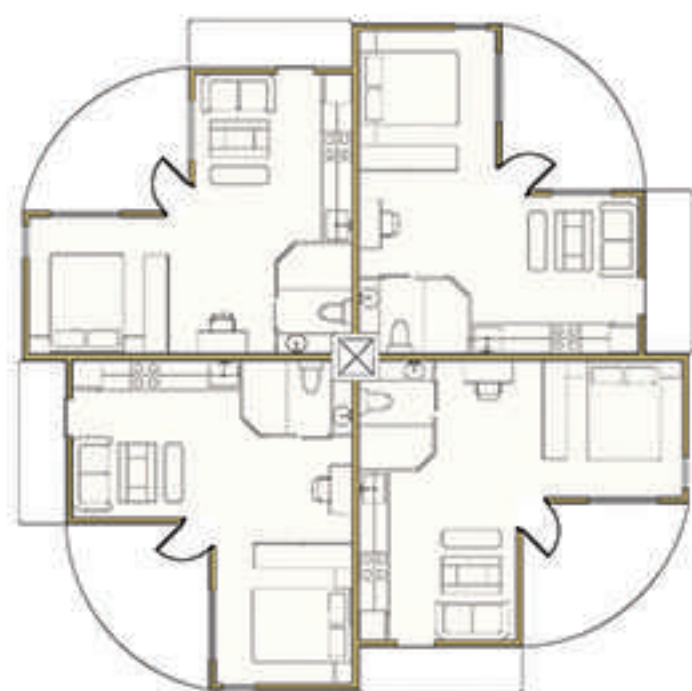
The mezzanine floor is placed above the master bedroom in 35 and 40 Sq.m dwelling to achieve maximum clear height in private and semi-public spaces to impart illusion of granduer.



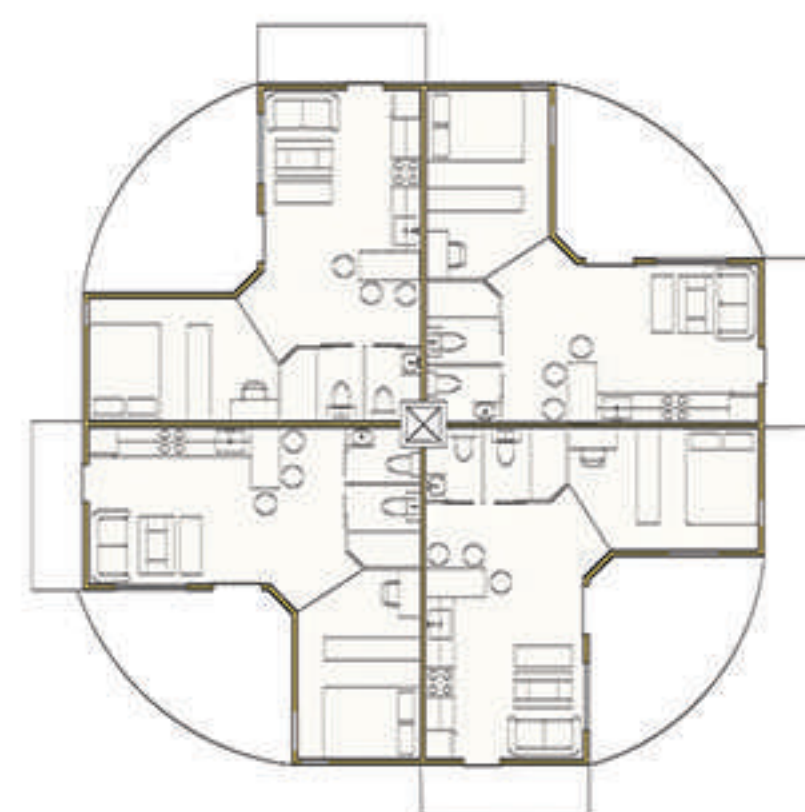
Mezzaanine Floor 35 Sq.m dwelling



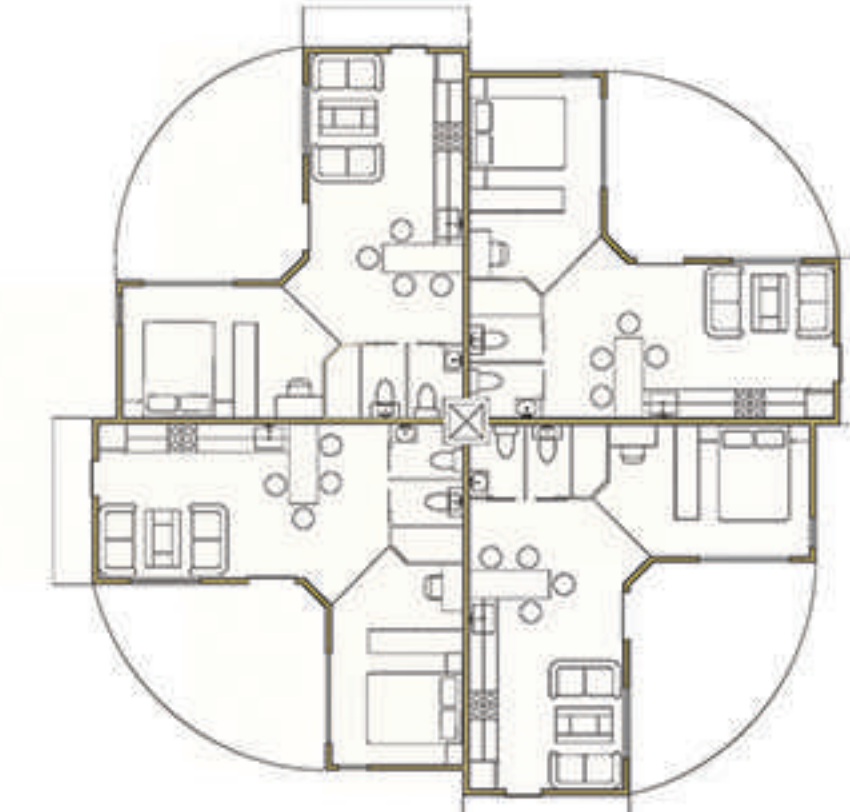
Mezzanine Floor 40 Sq.m dwelling



Ground Floor Plan 30 Sq.m dwelling



Ground Floor Plan 35 Sq.m dwelling

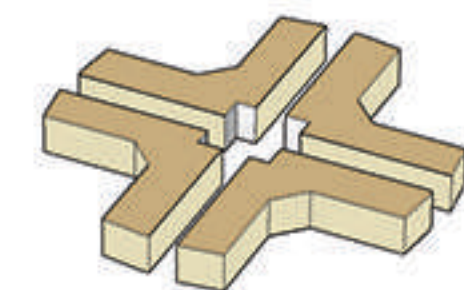


Ground Floor Plan 40 Sq.m dwelling

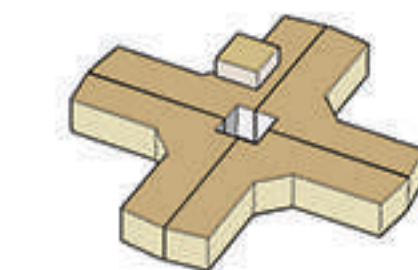
## EVOLUTION OF FORM



To amalgamate the built environment with the surrounding landscape each dwelling has a vertical garden. A viewing deck has been accommodated to facilitate a connection with the nature as well as the community.



To maximise utility of space and provide separation of private and public areas an L-shape plan has been developed. To ensure better circulation in the dwelling the door has been centrally placed.



Each cluster consists of 4 dwellings having a common services shaft with all units maintaining homogenous planning.

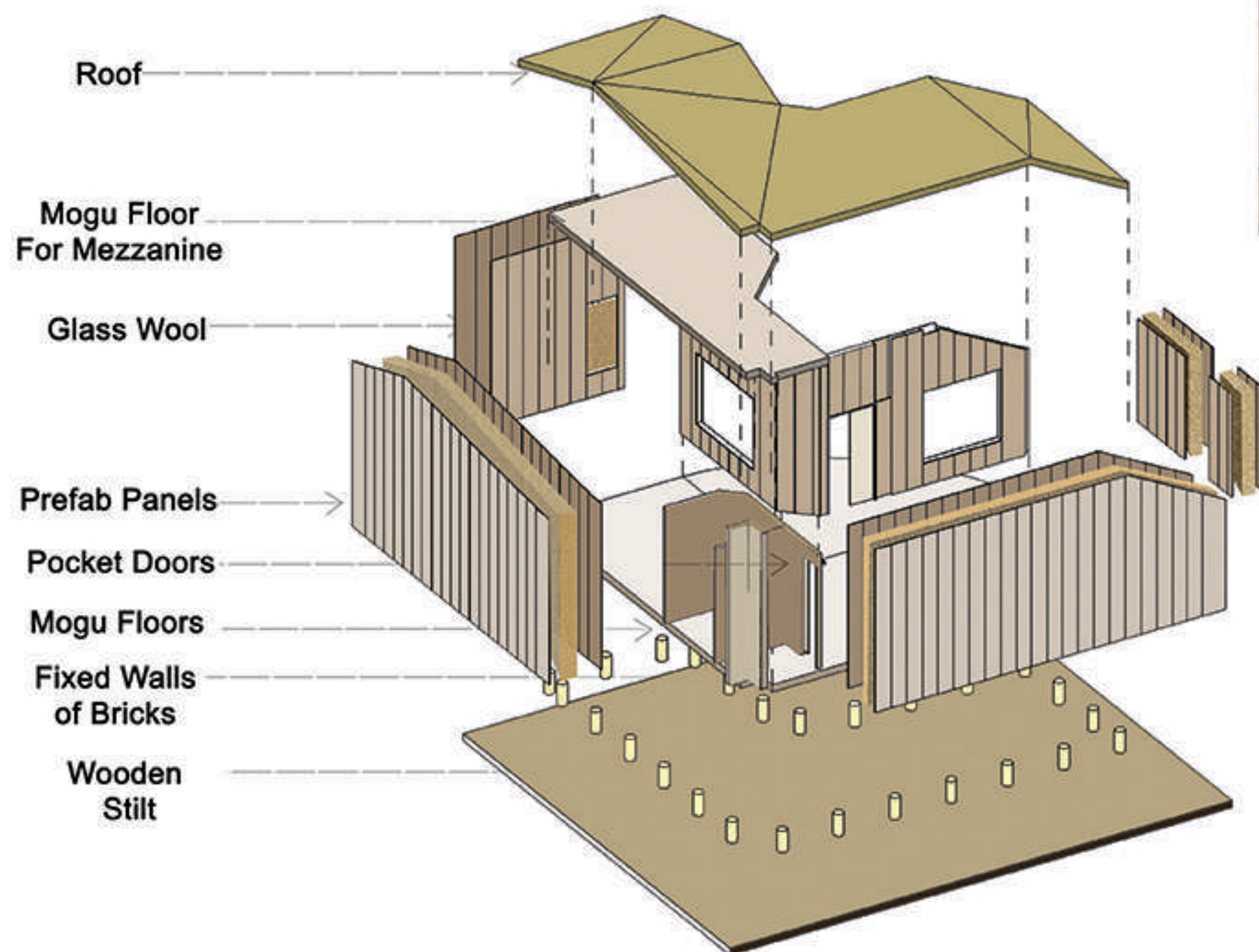


To depict unity and encourage community living the base form selected for cluster planning is a circle.



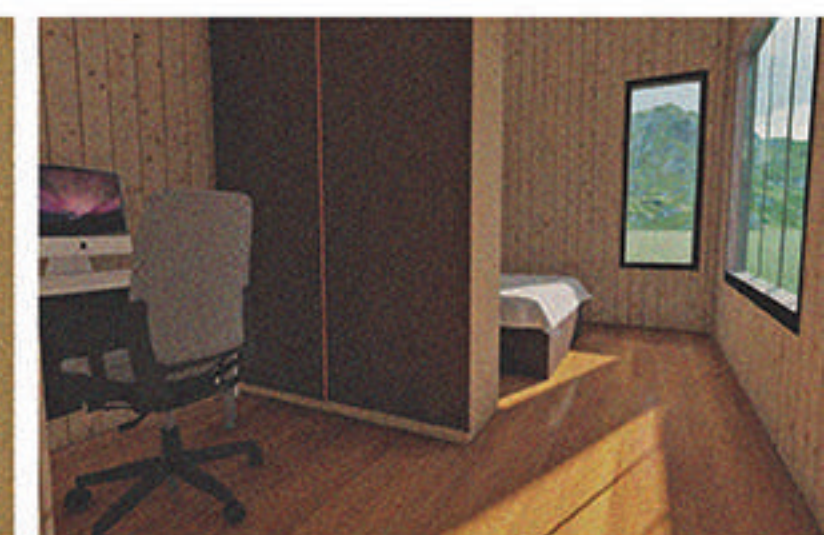


## COMPONENTS



Enviro Board- prefab material.

A low-cost straw based paneled material, enviro board acts as a lightweight, sustainable and portable solution apposite for the cluster construction. Each module has identical measurement for all the dwellings allowing it to be relocated and repurposed on the site.



## FURNITURE

Keeping in view the space constrains in tiny house, modifiable furniture acts as an essential element. A coffee table convertible to dining table has been added in the dwellings to cater to larger gathering and add luxury to the house.



## SUGGESTION



Solar panel acts as a renewable source of energy providing unlimited electricity to the dwelling. Modern living contributes to water wastage thus rain water collection and other water conservation methods like providing multi use wash basin and flushing toilet systems makes the dwelling sustainable. Reusable prefabricated panels help in the reduction of construction waste thus contributing to the sustainability