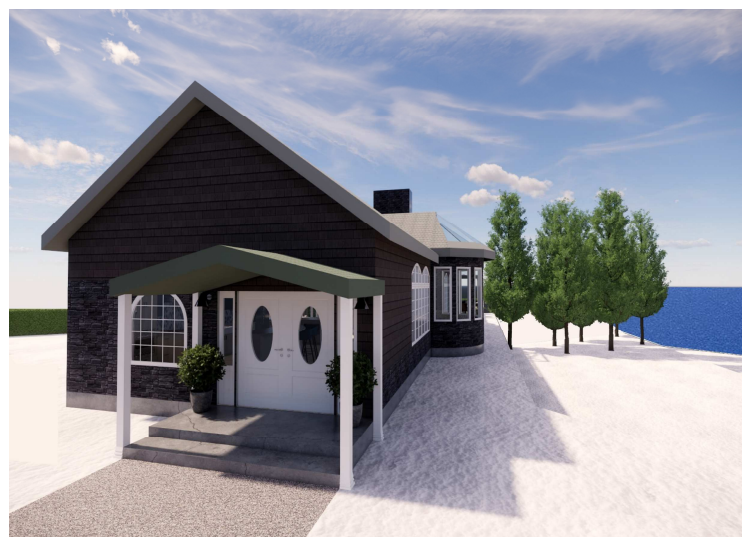




Concept

The design of The SnowDrop chalet is intended to simulate the feeling of being inside a snow globe through its dome-like turrets that let in an abundance of natural light, as well as glossy surfaces that reflect the light around the interior, and light fixtures that cast intricate swirling shadows.

The SnowDrop



Front Entrance

A sweeping circular drive flanked by evergreen trees leads up to the grand front entrance. Rustic stone, cedar siding, and scalloped shingles in charcoal gray and forest green radiate warmth and charm.



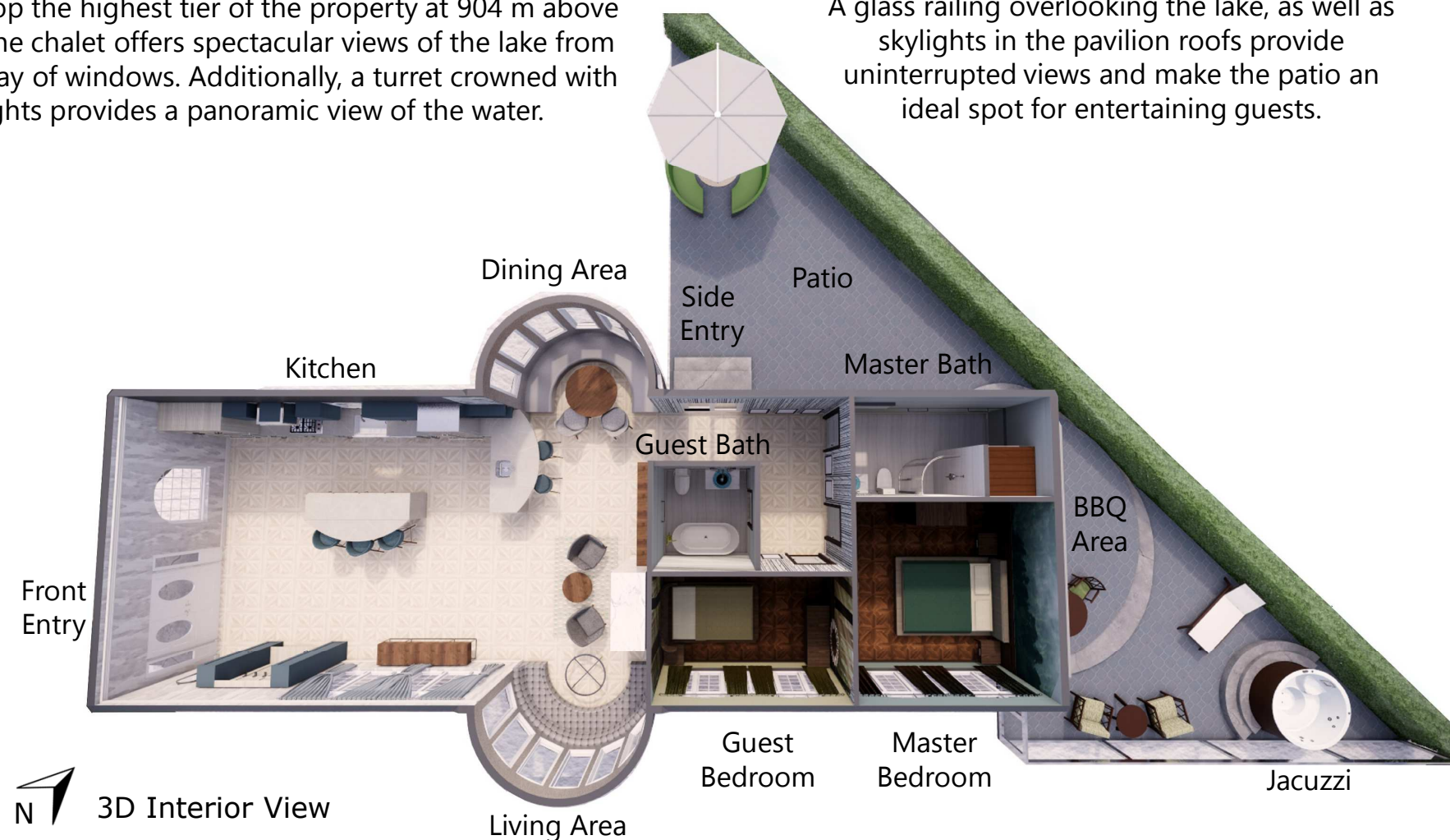
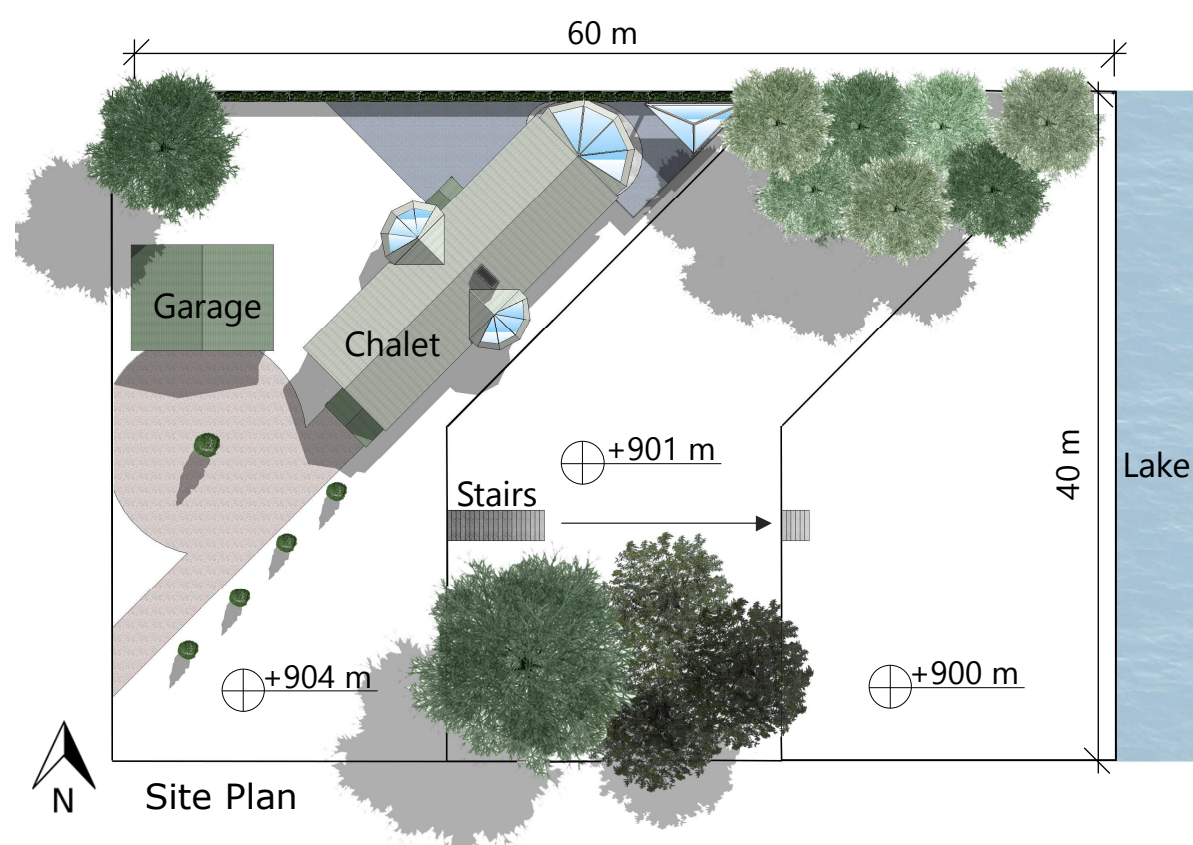
Lakeside Façade Elevation

Perched atop the highest tier of the property at 904 m above sea level, the chalet offers spectacular views of the lake from its wide array of windows. Additionally, a turret crowned with skylights provides a panoramic view of the water.



BBQ Area & Jacuzzi

A glass railing overlooking the lake, as well as skylights in the pavilion roofs provide uninterrupted views and make the patio an ideal spot for entertaining guests.



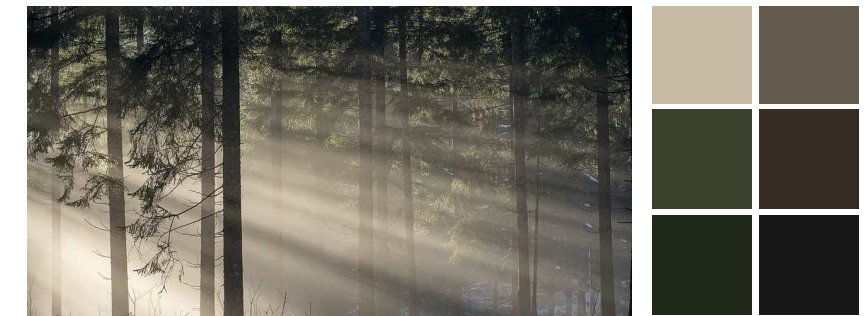


- 1 Front Entry & Kitchen | 6 m x 10.9 m | 65.4 sqm
- 2 Living Area | 1.75 m radius | 4.8 sqm
- 3 Dining Area | 1.75 m radius | 4.8 sqm
- 4 Side Entry & Hallway | 9.3 sqm
- 5 Guest Bathroom | 2 m x 2 m | 4 sqm
- 6 Guest Bedroom | 2.5 m x 4 m | 10 sqm

- 7 Master Bedroom | 4 m x 3.85 m | 15.4 sqm
 - 8 Master Bathroom | 2 m x 4 m | 8 sqm
- Total indoor area: 121.7 sqm
- 9 Patio | 13 m x 6.86 m | 44.59 sqm
 - 10 Covered BBQ Area | 3.6 m radius | 20 sqm
 - 11 Covered Jacuzzi with a 1.8 m diameter

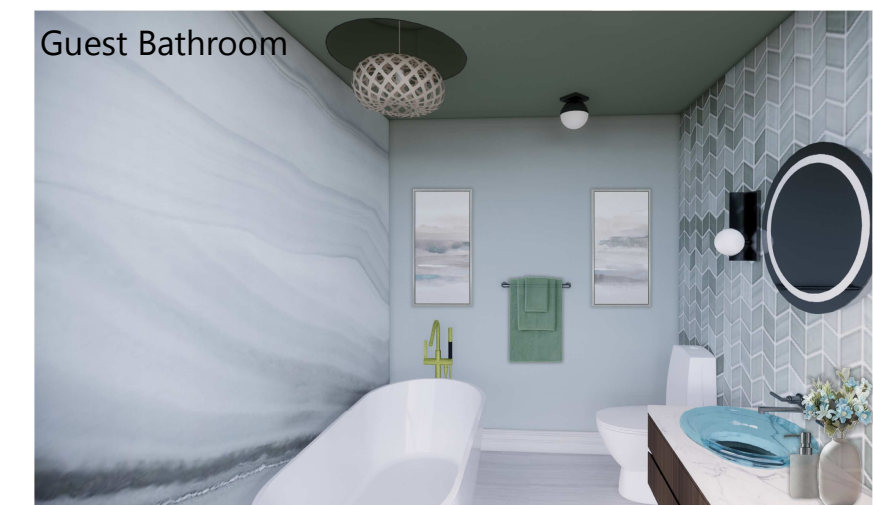


The SnowDrop



Colour Scheme

The finishes for the master and guest suites are inspired by a secluded forest glade. Wallpaper depicting sunlit clearings and lush canopies of leaves creates a peaceful sanctuary, while glazed porcelain tiles and polished marble in the bathrooms encompass the varied hues of a forest landscape.

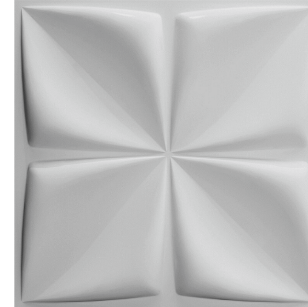




Colour Scheme

The finishes for the living spaces are drawn from the snowy whites, granite greys, and steel blues of a mountain range.

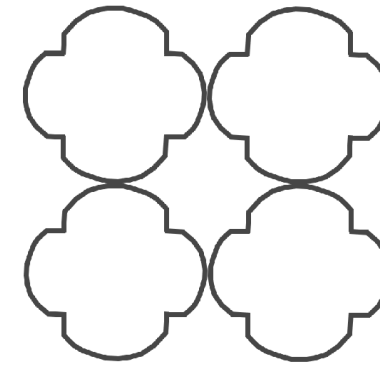
Dundee Decor 3D Wall Panels



Euro Tile & Stone Maison Tiles



The wall, floor, and ceiling finishes resemble the shape of a snowflake.



Custom Metal Quatrefoil Illuminated Ceiling Feature



David Trubridge Kina Light

The SnowDrop

The pendant lights cast a delicate latticework of shadows on the ceiling mimicking the feathery flight of snowflakes as they descend from the sky.

Kitchen & Dining Area



Living Area & Kitchen



Kitchen Elevation



Fireplace Elevation

