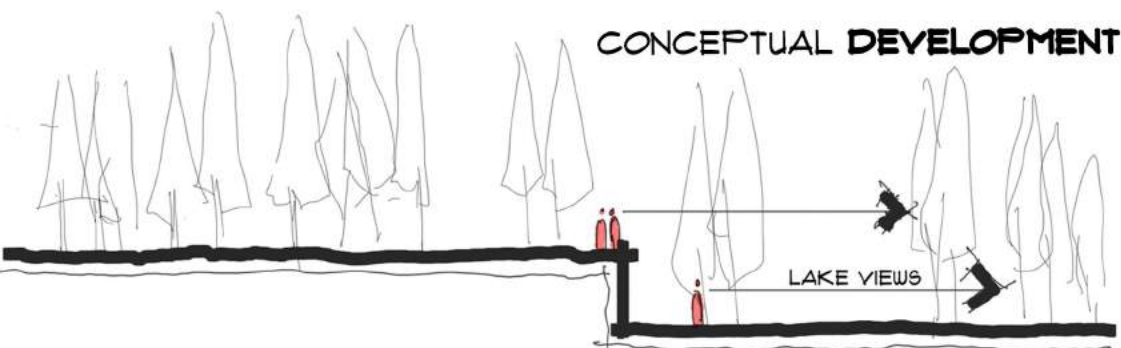
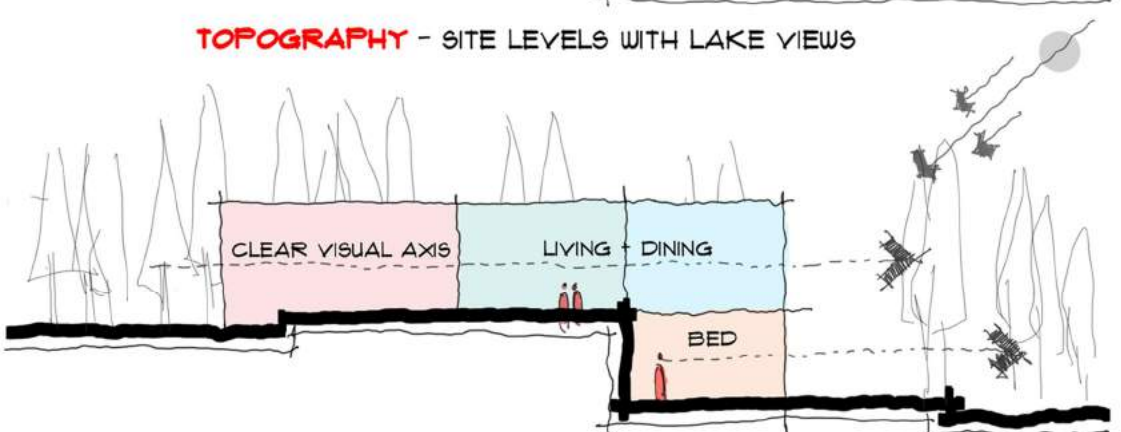


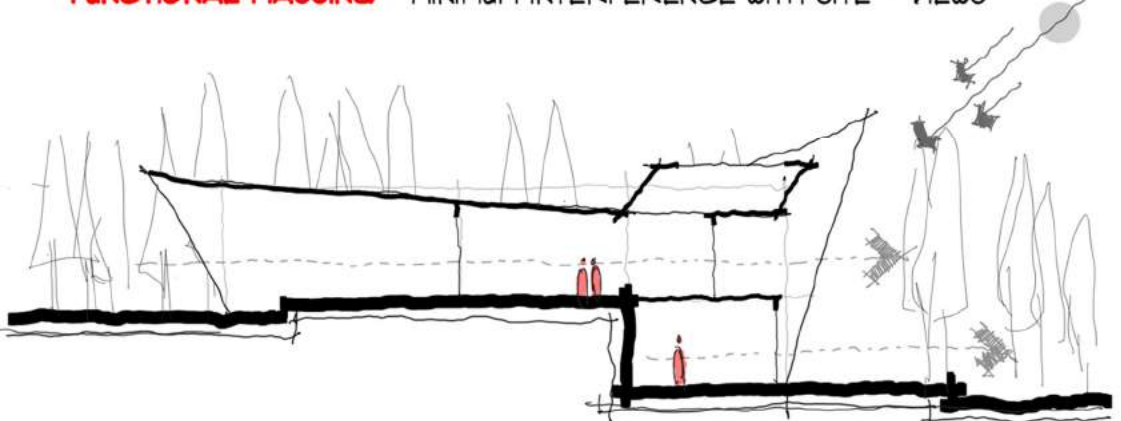
CONCEPTUAL DEVELOPMENT



TOPOGRAPHY - SITE LEVELS WITH LAKE VIEWS



FUNCTIONAL MASSING - MINIMUM INTERFERENCE WITH SITE + VIEWS



ORGAMIC VOLUMES - INVITING SUN AND INCORPORATING VIEWS



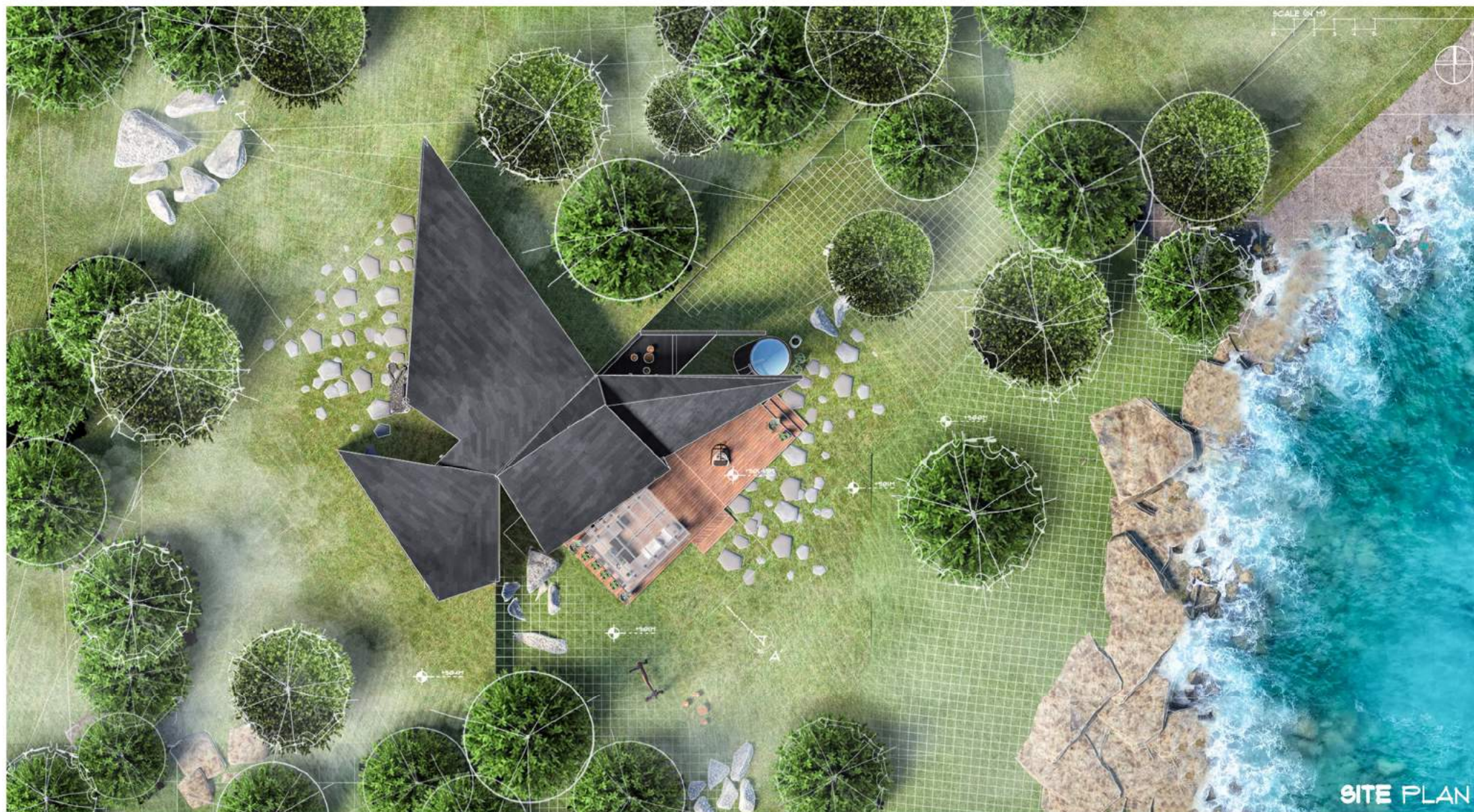
VIEW FROM LAKE

LAKESIDE WINTER CHALET

The unique origamic volume morphing in between the woods gives the user a unique experience in terms of space aesthetics and also increasing views of the lake in front. Overall The design is kept minimal yet unique in terms of concept development and materiality. The topography is kept almost the same with no interference and even the internal space planning is done in a compact manner to reduce heat loss while maintaining views.

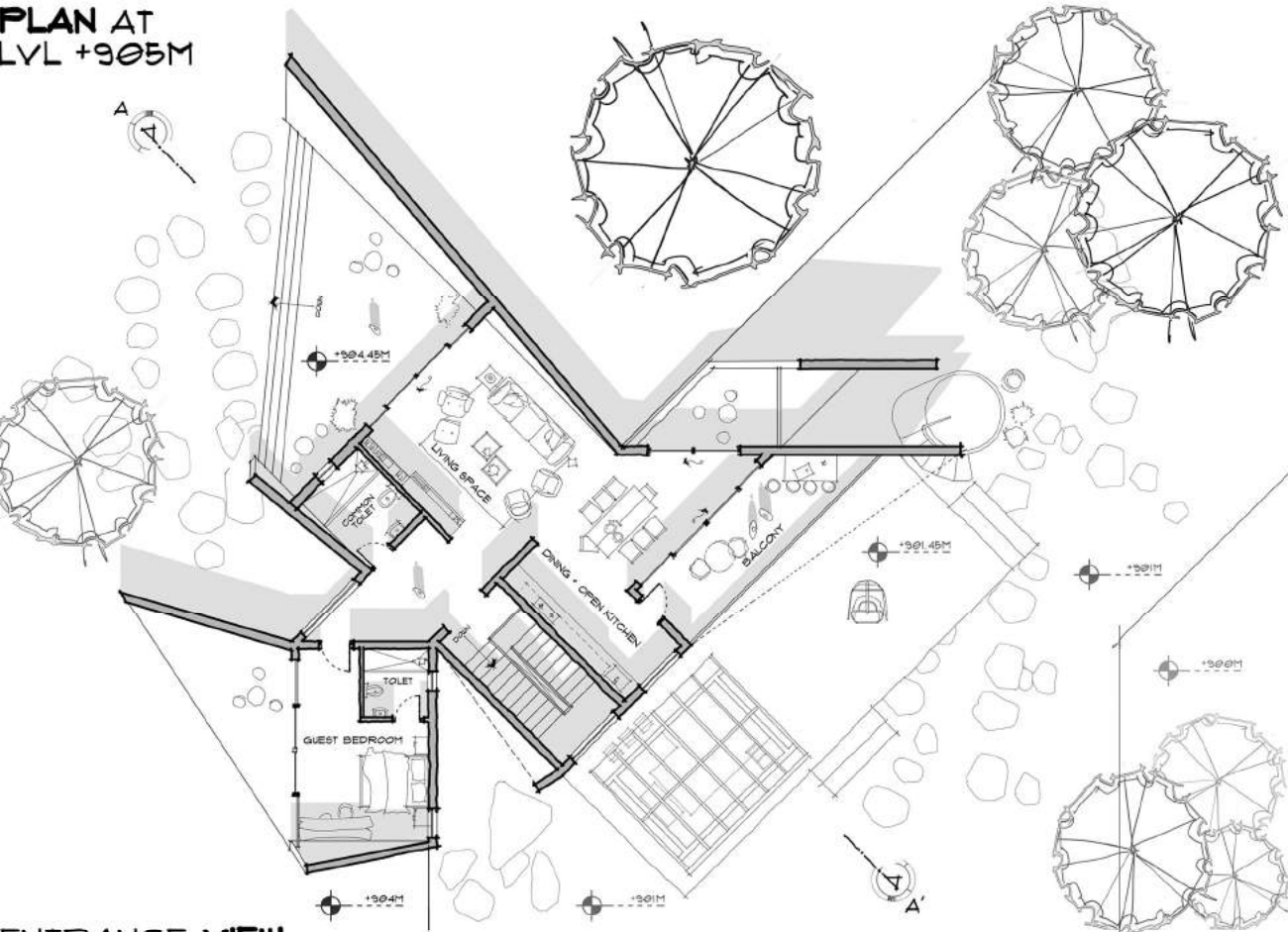


HUMAN EYE VIEW



SITE PLAN

PLAN AT LVL +905M

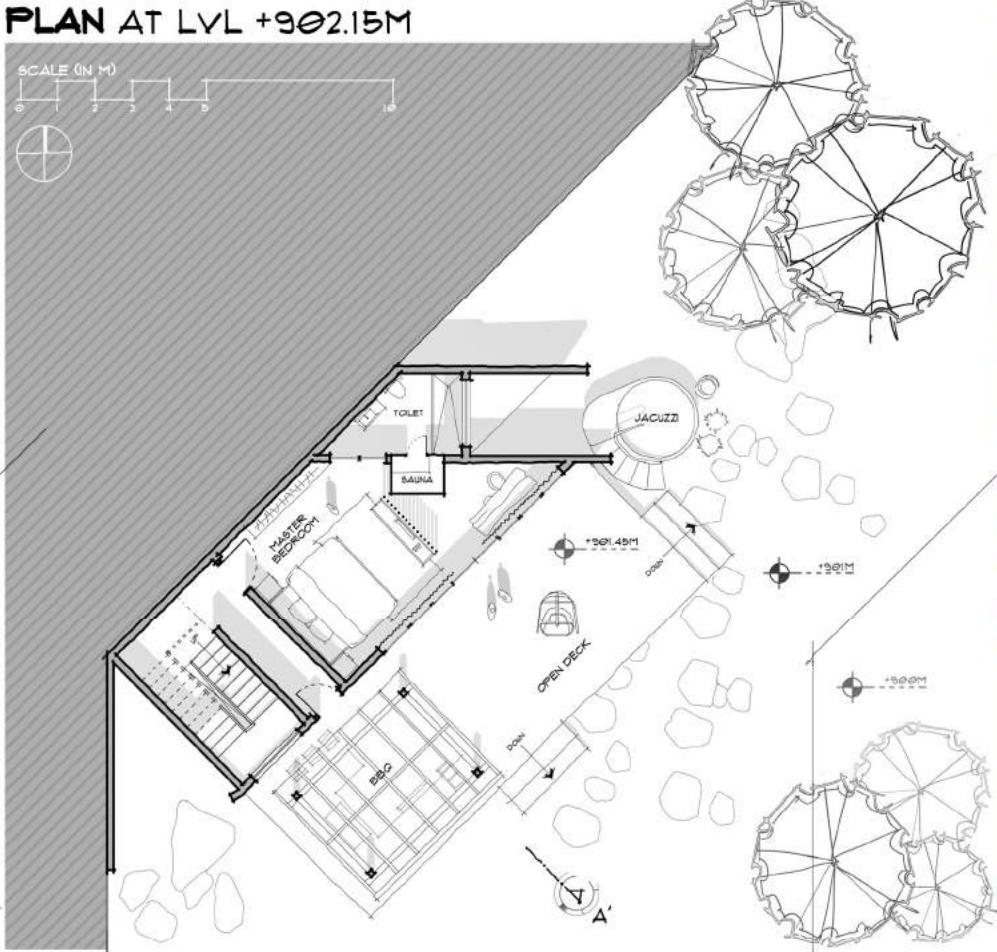


ENTRANCE VIEW



SECTION AA'

PLAN AT LVL +902.15M



ARIAL VIEW



HUMAN EYE VIEW



130 METRICS



