

# QUARANTINE POD

Xinzhao Li  
Maria Quiroz

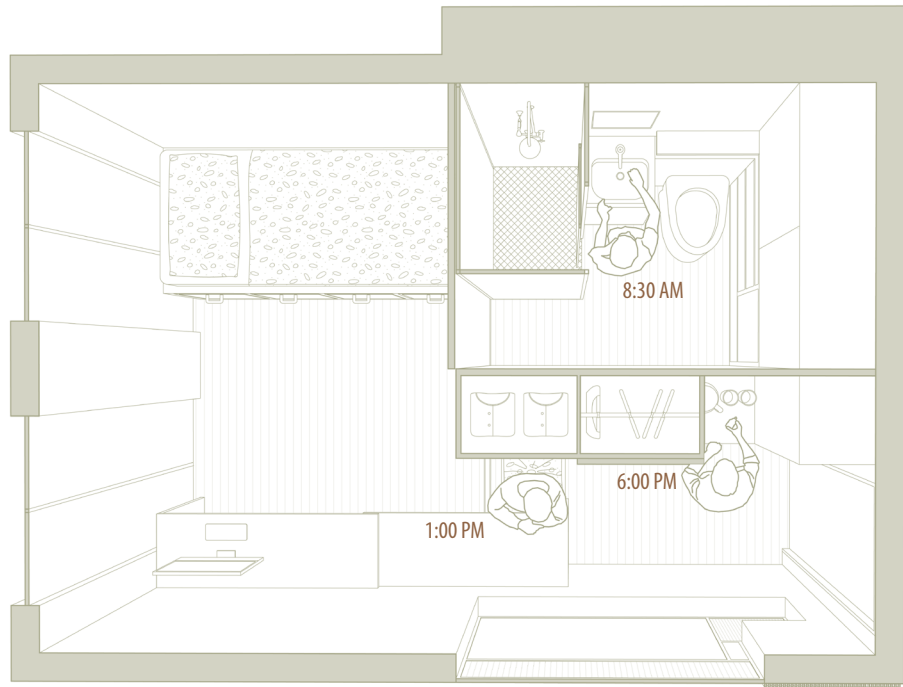
*Our quarantine pod aims to be a protective space that satisfies the user’s essential needs during their isolation period. The design explores the balance between the private personal space and the shared personal space by allowing the user to open or close the three areas of the room.*

*We designed the furniture to separate each area and spatially distribute the user’s activities to avoid staying in the same compartment all the time. As the user interacts with the pod, they are able to develop their own routine to help them get through their quarantine.*

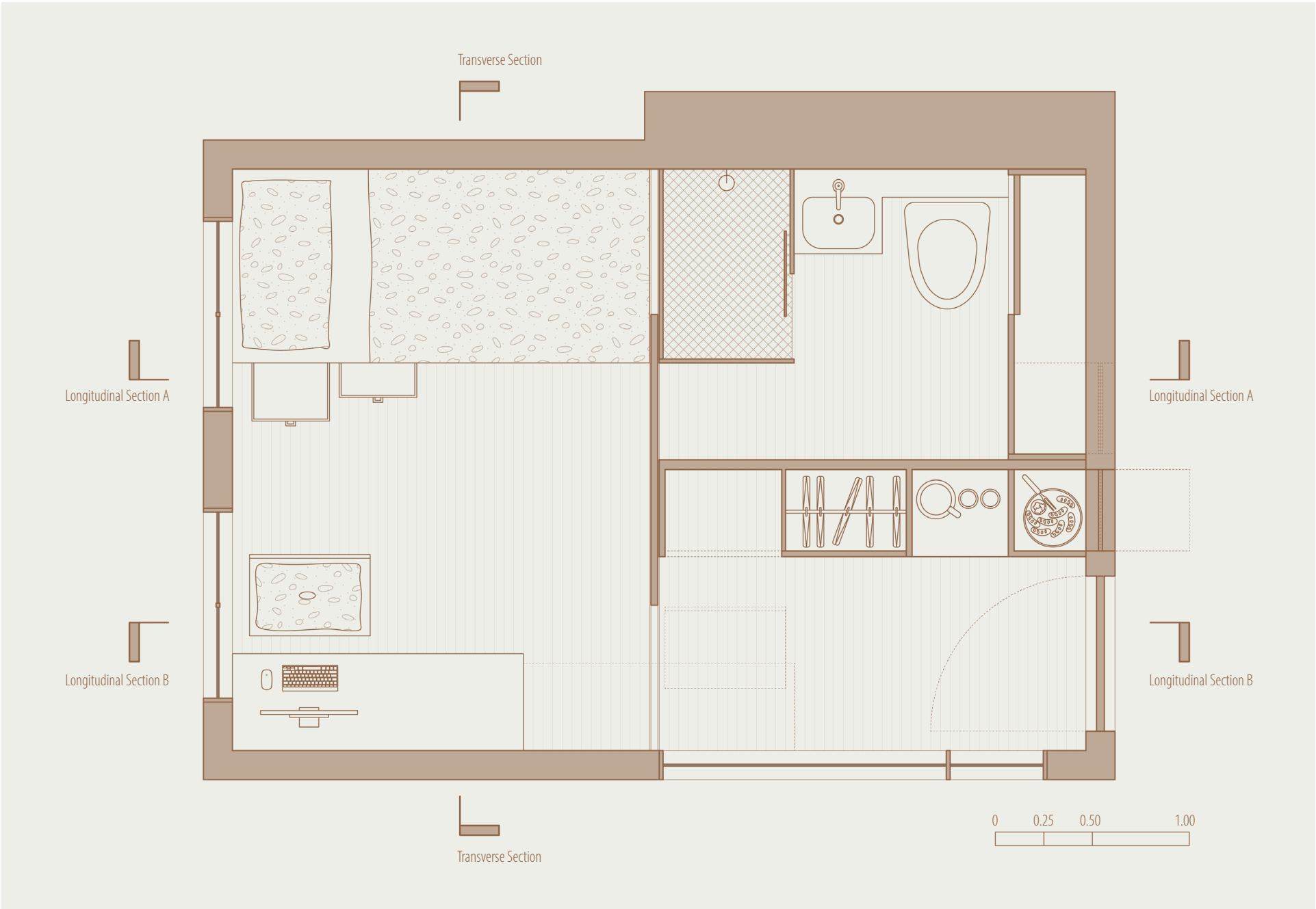
The permanent furniture of the room acts as a separator of areas, storage for the user’s belongings and as an interchanging hub between the exterior and the interior of the pod for food, laundry and disposal of waste.

The guest window allows a visual communication between the user and the outside that could also be helpful for medical purposes.

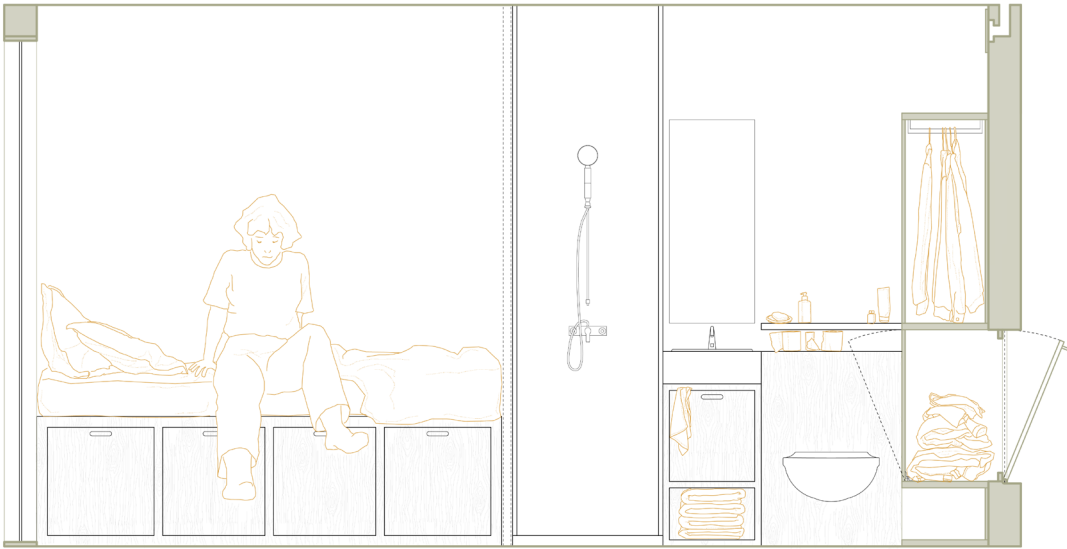
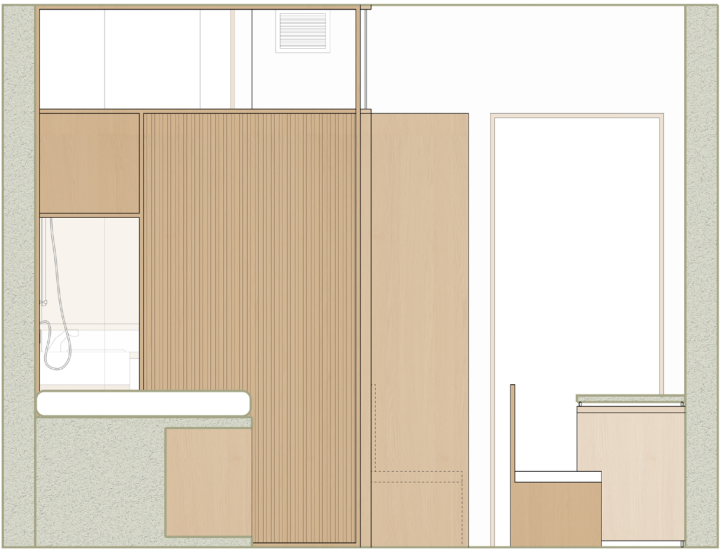
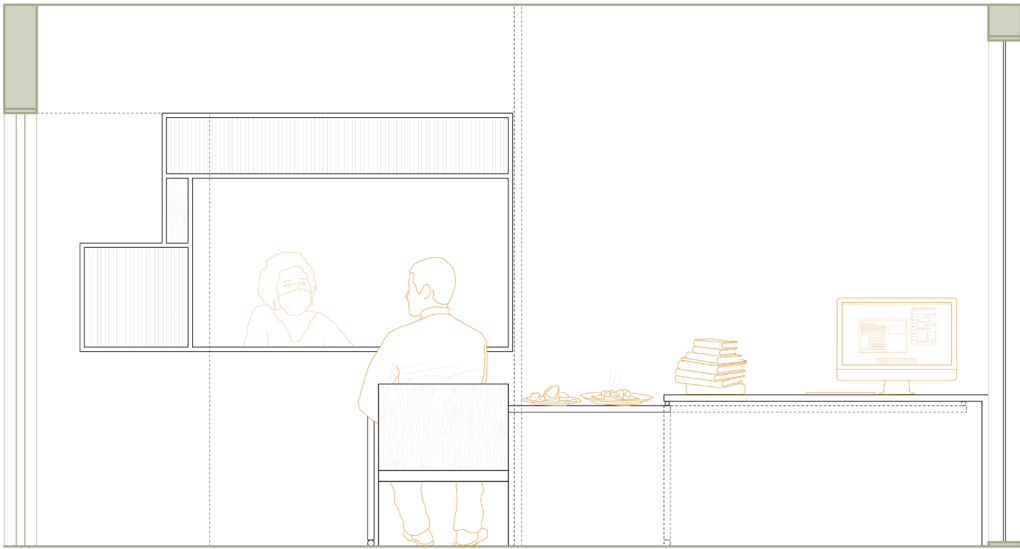
The table can expand under the guest window and create a safe space for the user and their relatives to share a meal and spend time together.



Top View Perspectives of Different Spatial Accomodations



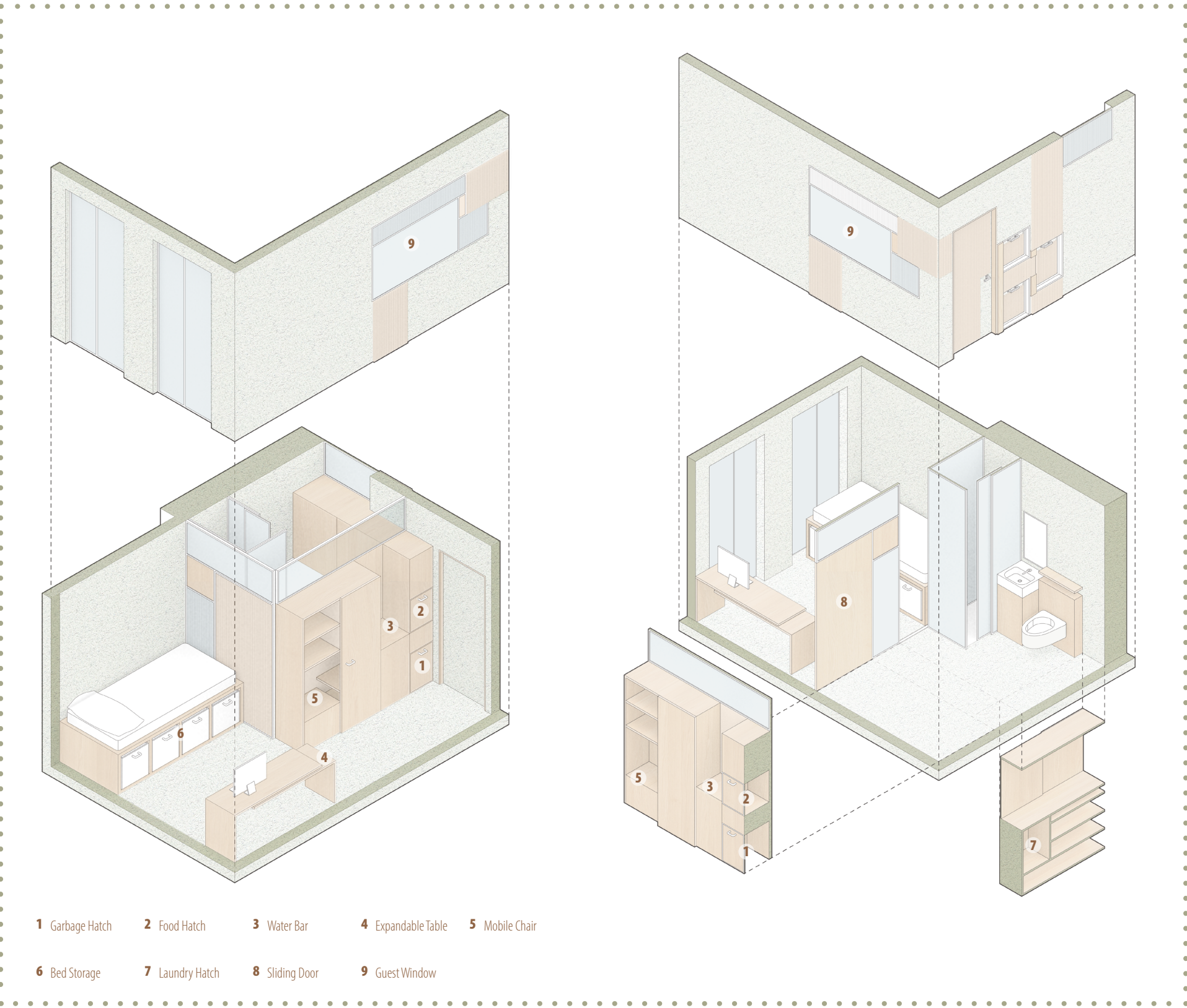
Floor Plan



Transverse Sections

Longitudinal Section A & B

0 0.25 0.50 1.00



- 1 Garbage Hatch
- 2 Food Hatch
- 3 Water Bar
- 4 Expandable Table
- 5 Mobile Chair
- 6 Bed Storage
- 7 Laundry Hatch
- 8 Sliding Door
- 9 Guest Window

Axonometric Drawings