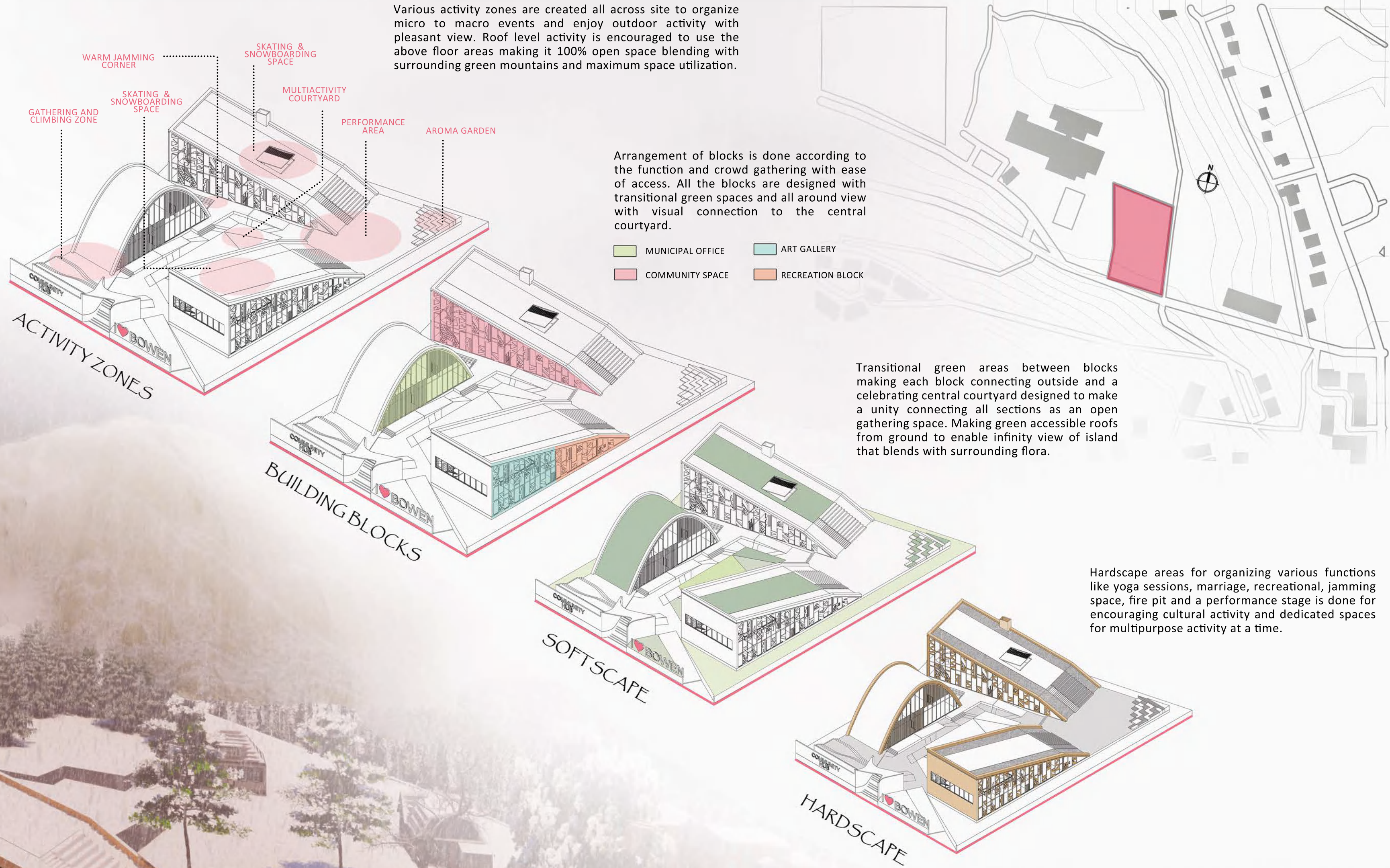


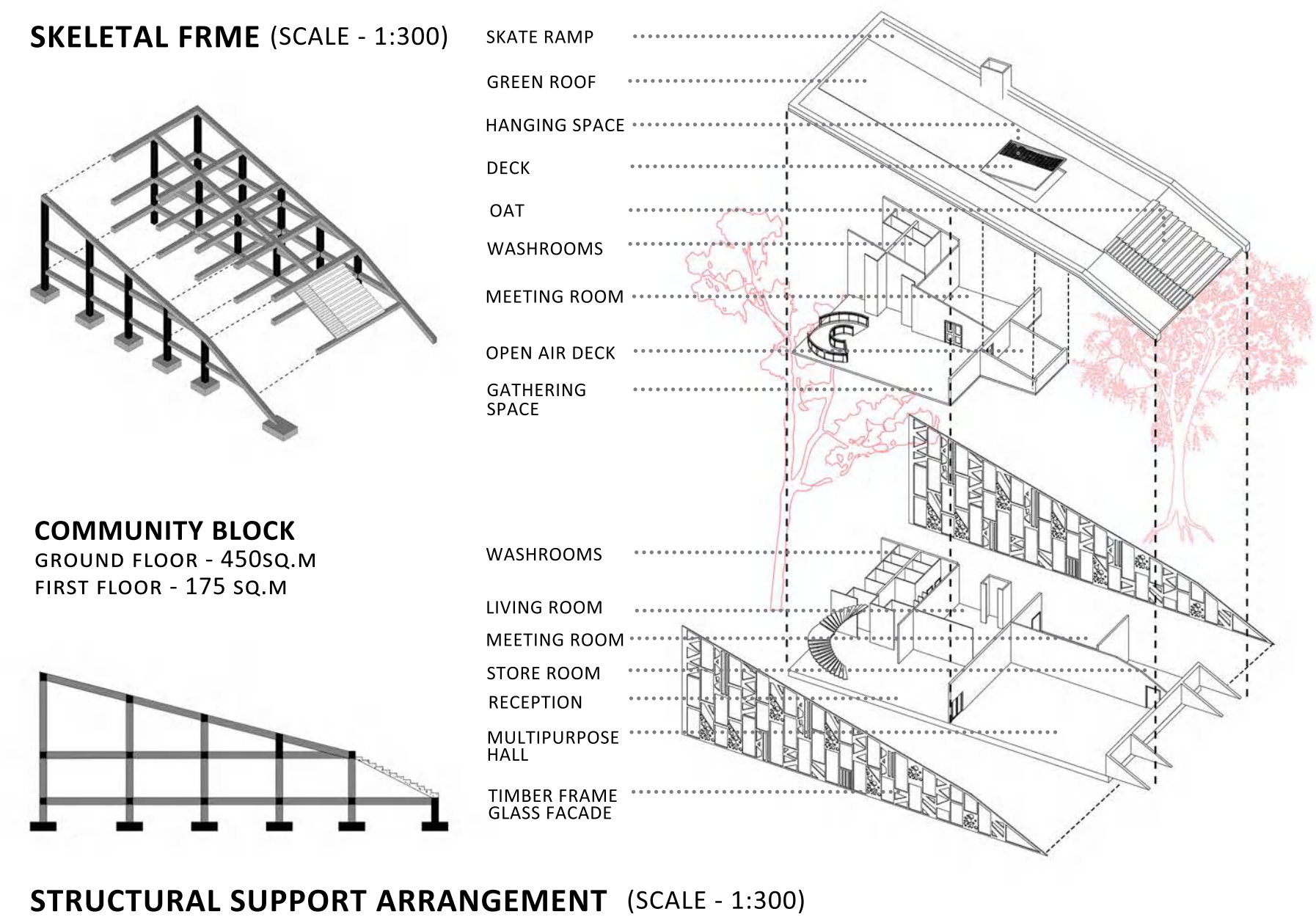
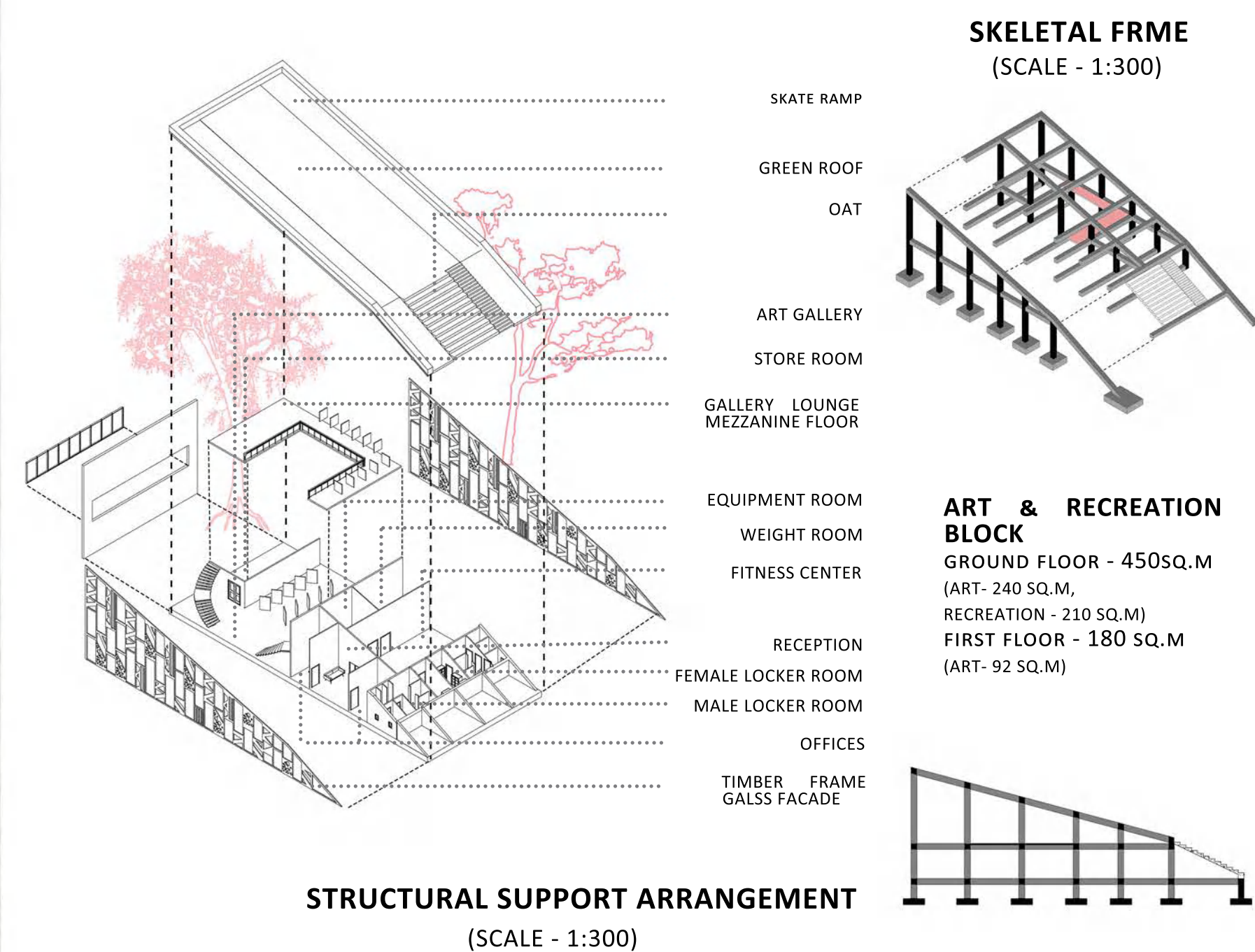
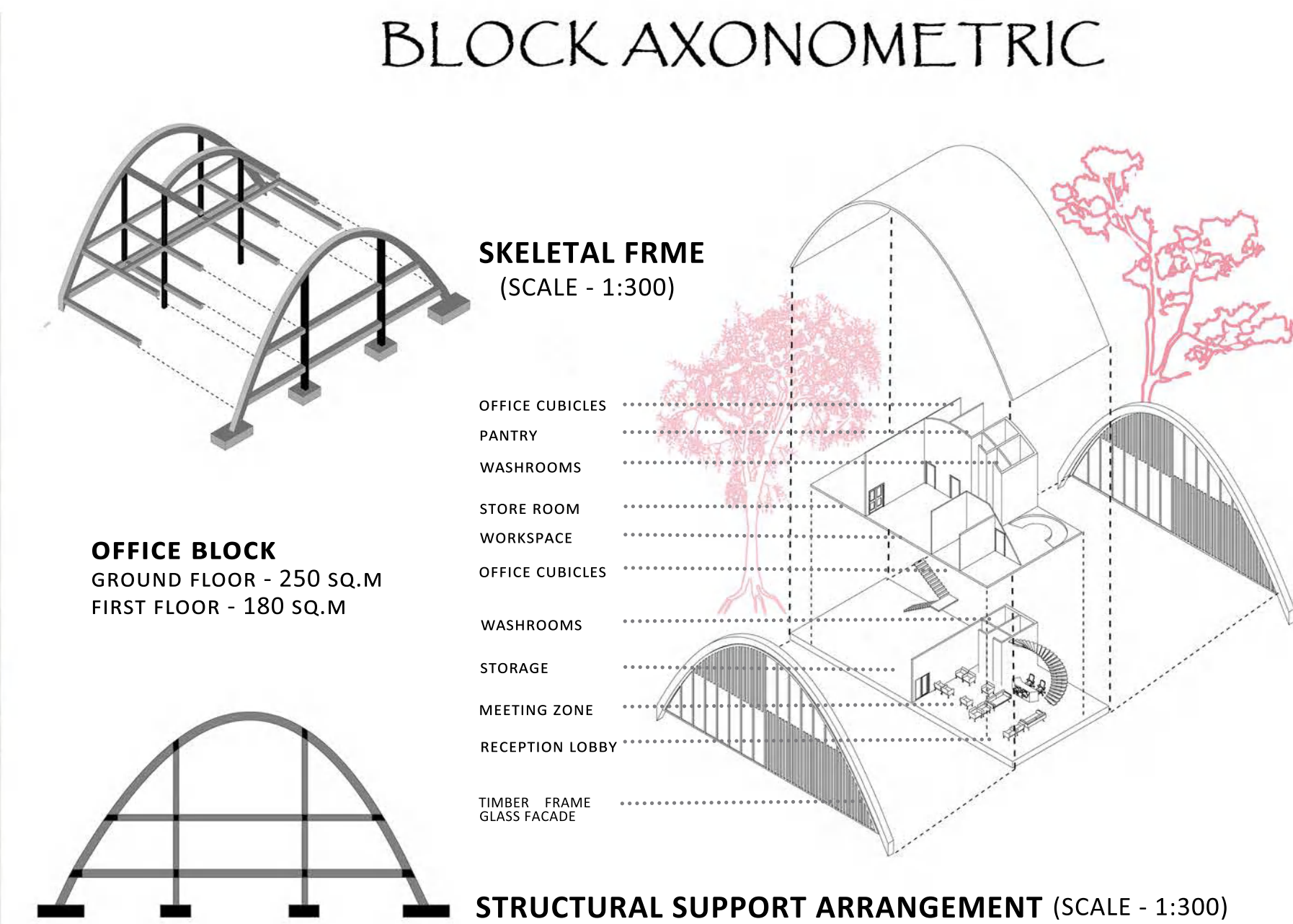
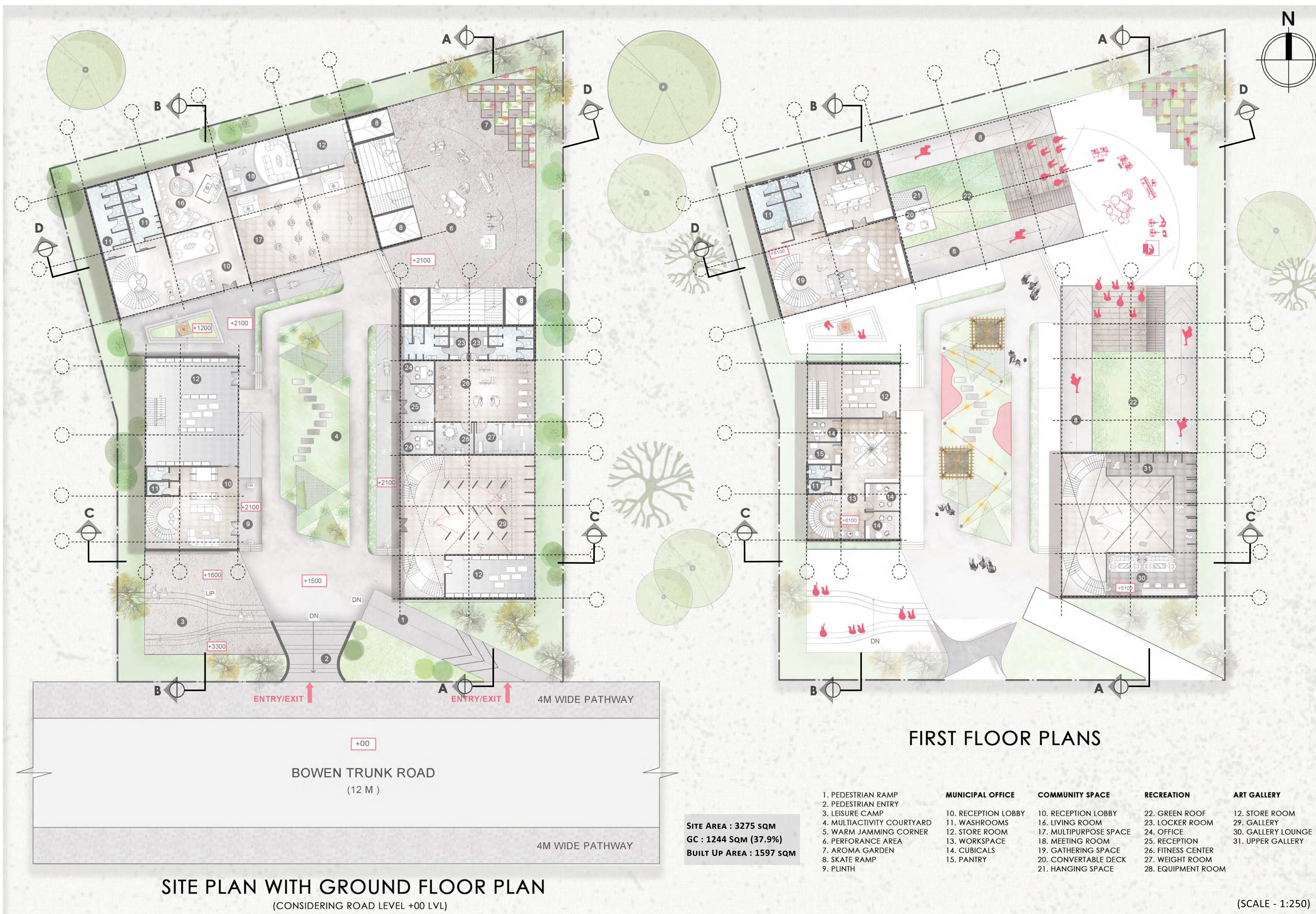
BOWEN 1.0

Bowen being a wonderful island with rich flora and fauna in nature's lap, our concept evolved responding contextually and coming up with structures blending with the surrounding mountains giving rise to various activities enhancing connection & belongingness of people towards the hub. Merging contemporary architecture with biophilic trends the spaces have been designed which connect inside out and involve nature as a key element. With universal design strategies, all roofs have been designed with infinity view of island and feeling the essence of living on mountains. Considering diverse climatic conditions, spaces are designed to have warm shaded seating areas both open n close for winter outdoor activities. Techniques are inhabited to make convertible spaces that are compatible to all weather conditions for serving various kinds of activities according to need ranging from formal, informal to recreational gatherings. Incorporating art in the design was one of the major aspects to connect people and enrich them with the rich heritage and culture of the island with getting a first impression for the people defining the Bowen Island in the language of Architecture. Aroma garden is designed to incorporate the healing power of nature to create a positive aura and a peaceful environment with community yoga and exercise spaces blending in with nature's gift.



FORM DEVELOPMENT

- The built mass is positioned in the site symmetrically & creating equal setback of 3M on each sides. It creates the most optimum built form, which could be utilized on the site.
- To create more accessibility, open cut is formed in the mass that helps in connecting through internal courtyard to the main access & street.
- The mass is future split into zones, based on the program. The rear block is dedicated to the community block which would occupy the maximum area.
- The final built mass is a result of a breakdown of the community block, office block and recreational cum art block divided into two equal spaces. This gives a sense of openness in throughout the blocks with optimum view.
- Slant roof is created with incorporating roof LVL activity connecting right from the ground and constructing green roof making it a full 100% green open area over structure with infinity island view over structure towards sustainable design.
- Adding steps on the roof from ground makes it a open amphitheater facing the multipurpose space to enjoy any kind of function or theater hosted anytime.



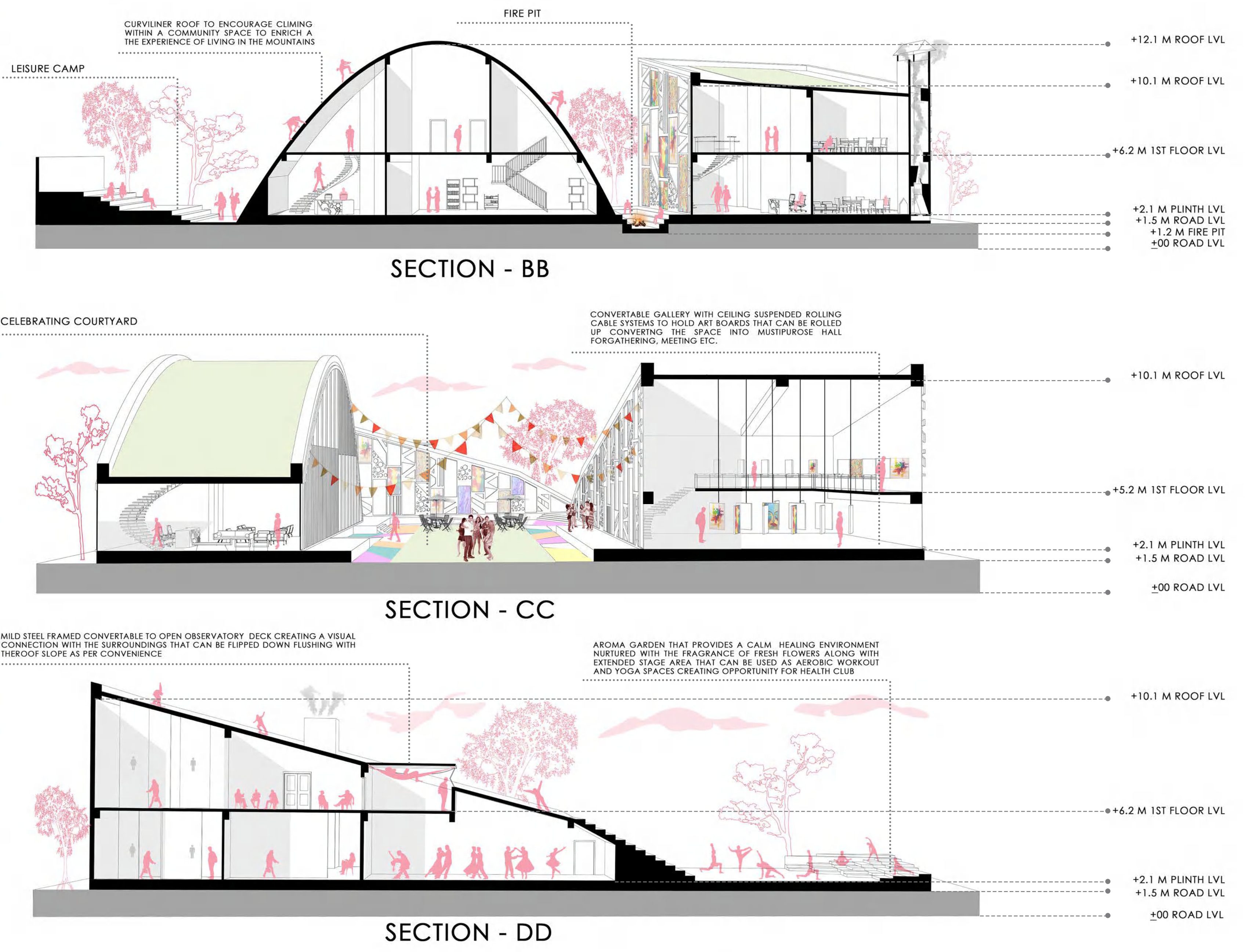


SNOW WORLD

Experiencing snow and enjoying it is a full mountain living experience with infinity view all around. Sloped roof form is taken considering local climatic condition and utilizing snow for fun and giving possibility to ski on building roof to ground which is unique of its kind in any built form. Not only caring about present generation but also for future these activities are incorporated as contemporary design and futuristic design which is also ahead of its time.

THE BOWEN WALL

Calling it the Bowen wall on the front façade, dedicating and inviting the island native artists to show and give the first impression to their own community by expressing their views, thoughts, rich cultural background of island, Bowen's historical significance and love in the form of art with various mode e.g. graffiti, abstract, fine, expressionism, minimalism, photorealism, digital etc.



SCENARIO -1

COURTYARD

Central Courtyard as a gathering and disperse area connecting all the block acting as an outdoor recreational zone with outdoor seating and celebrating space with all around view of organic timber frame façade each building reflecting the island community with art as a socially contextual design connecting and reflecting the rich island in nature's lap.

AROMA GARDEN

Exercise cum yoga space with aroma garden to have positive healing aura environment with beautiful fresh flower fragrance all around with stage in front to have large gathering and allowing everyone to participate and perform their own exercise with yoga collectively forming a health club.



SCENARIO - 2



SCENARIO - 3

LEASURE CAMP

Minicamp zone is given to have small gathering and have formal-informal outdoor sessions at the entry point with steeped seating area near office block, which is having roof inclined to the ground to blend with nature as a mountain form. This form is specifically given to give a mountaineering experience, encourage climbing giving a sense of physical activity, and live the mountains with its activity.

FIREPLACE

Outdoor fireplace is given between two blocks to resist cold breeze and have gathering space to enjoy beautiful cold winters outdoor with seating act as a mini recreational and barbeque space with easily convertible covered space with tensile fabric or pergola supported by two close built forms on either side.



SCENARIO - 4