

# NATURA

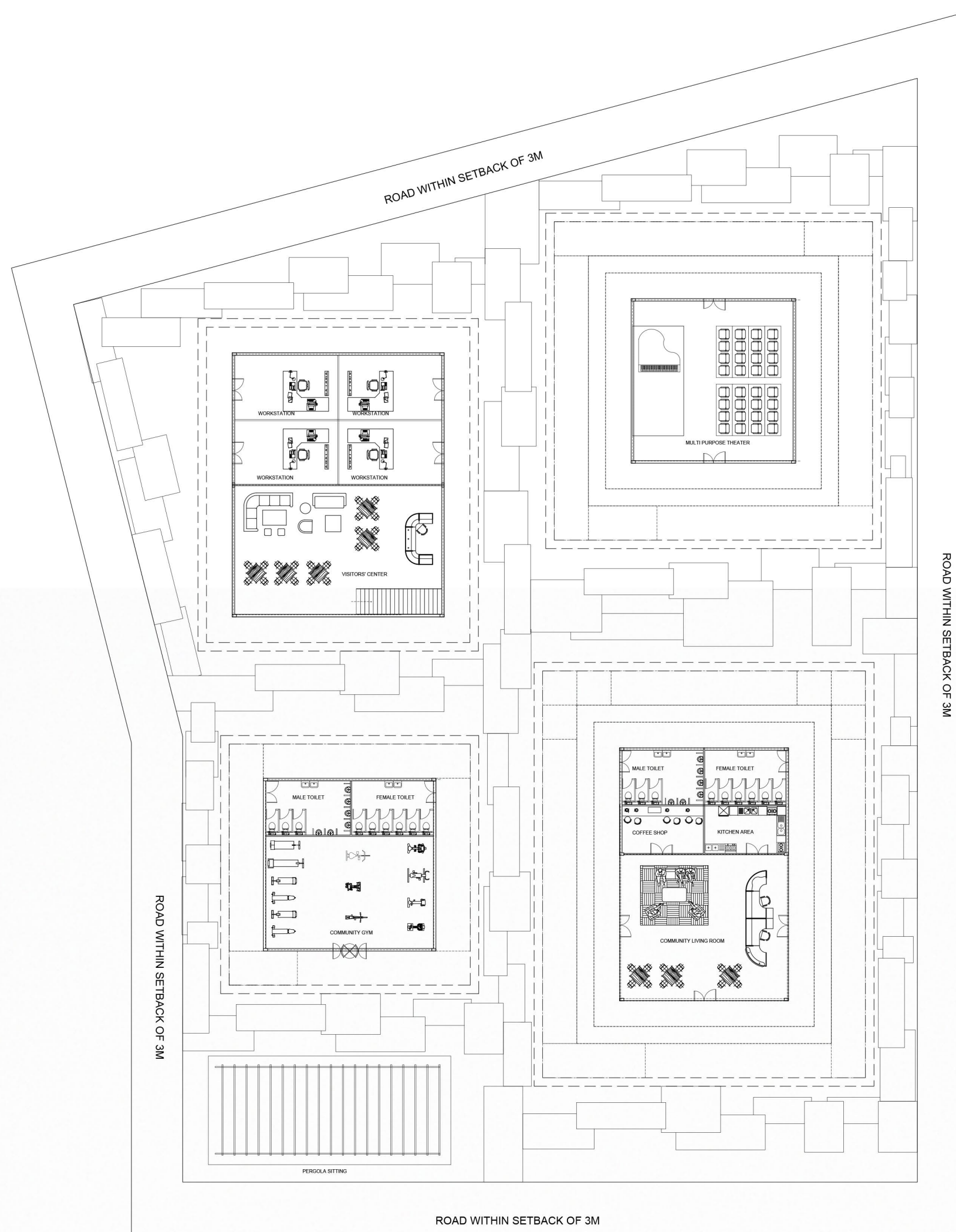
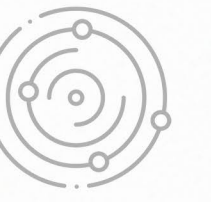
COMMUNITY CENTER , BOWEN ISLAND

An island within an island

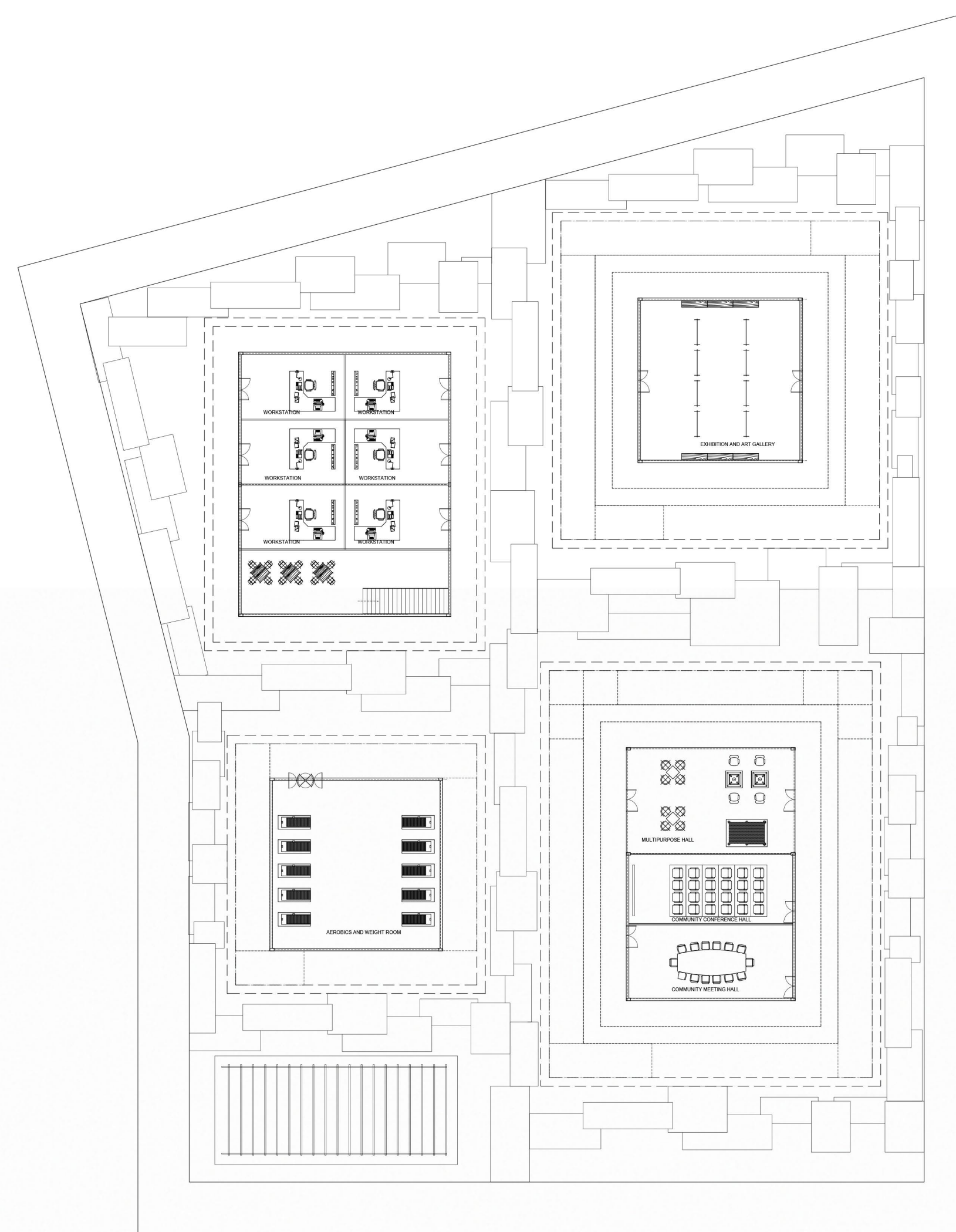
NAUTRA , residing in serene and calm island of Canada- Bowen island takes inspiration from the nature in it's core design form.

A design metaphorically representing the soul of Bowen island through it's design and overall ambience. Sourrounded by the pe-ripheral water body the community center sits atop, imitating the essence of Bowen island in design.

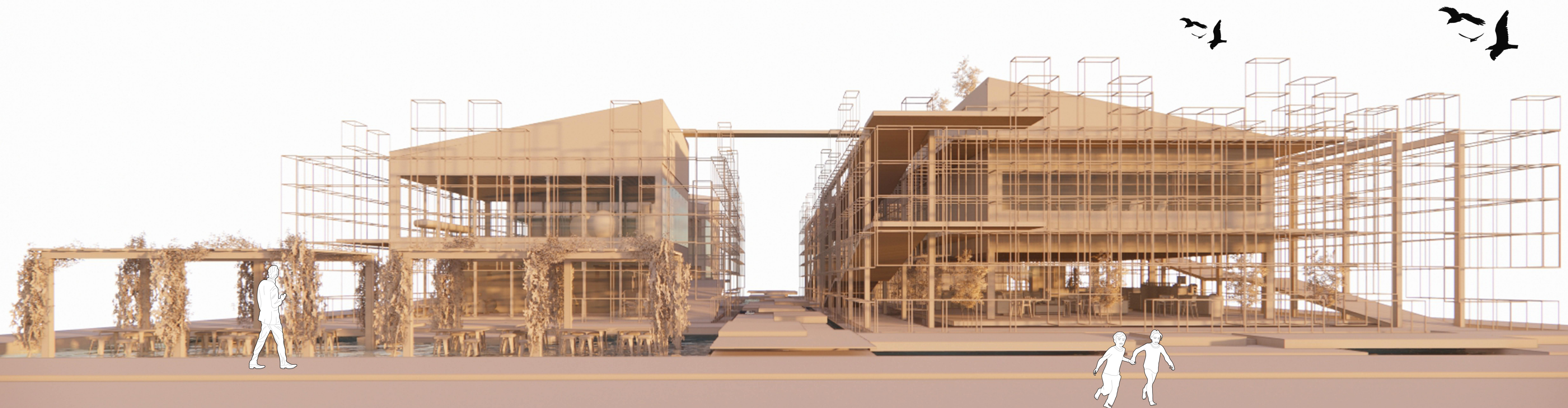
Not only this, the design form pays homage to five elements of Nature namely as : Earth, Fire, Space, Wind and the most significant one : water merging all the four elements and blocks as one.



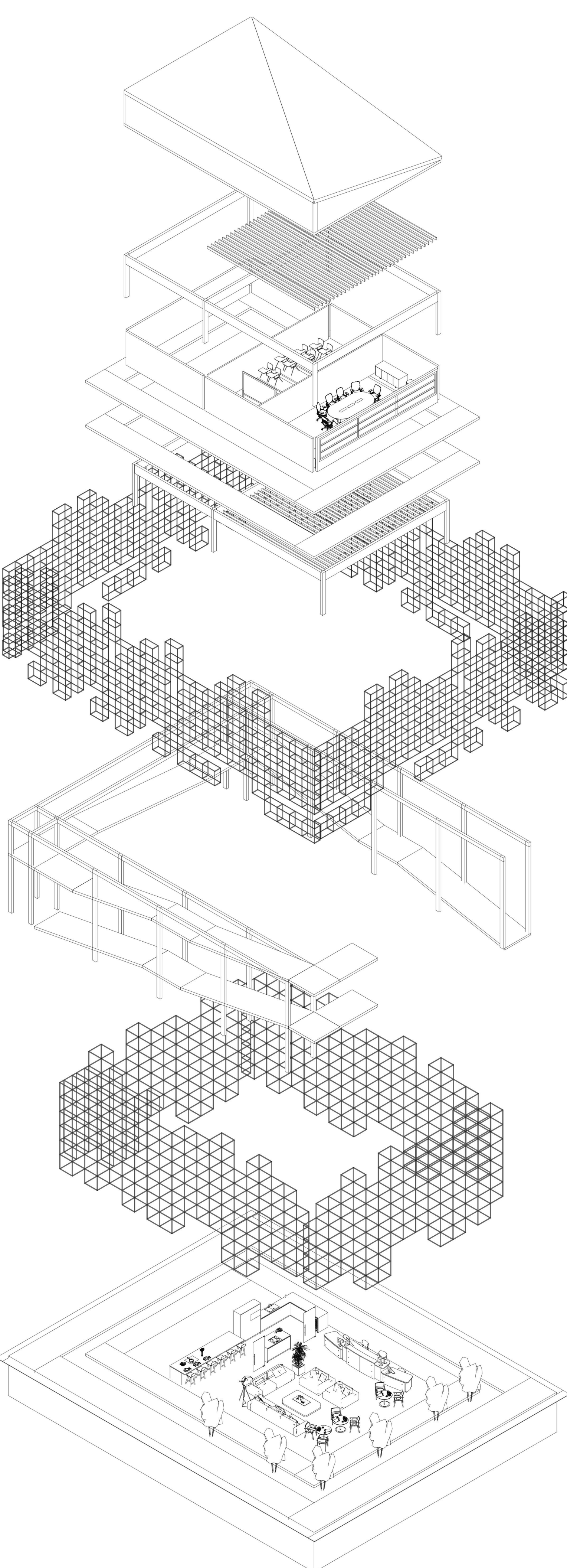
Ground floor plan



First floor plan







CLT roof with greenscaping

CLT mass timber structure system

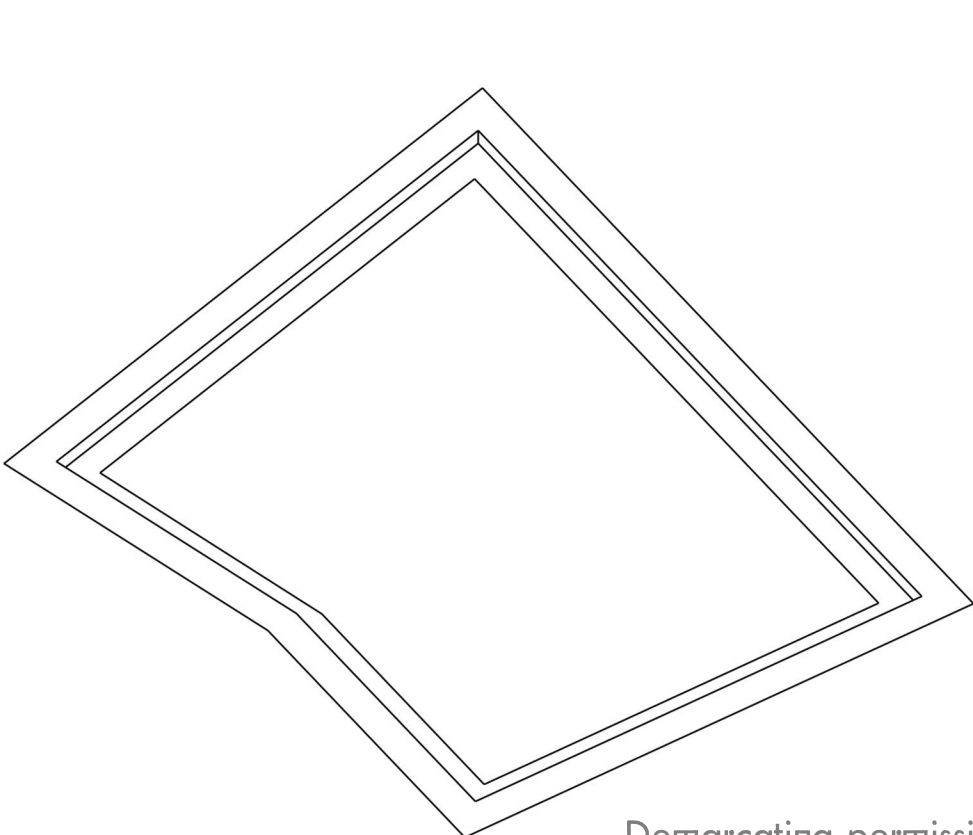
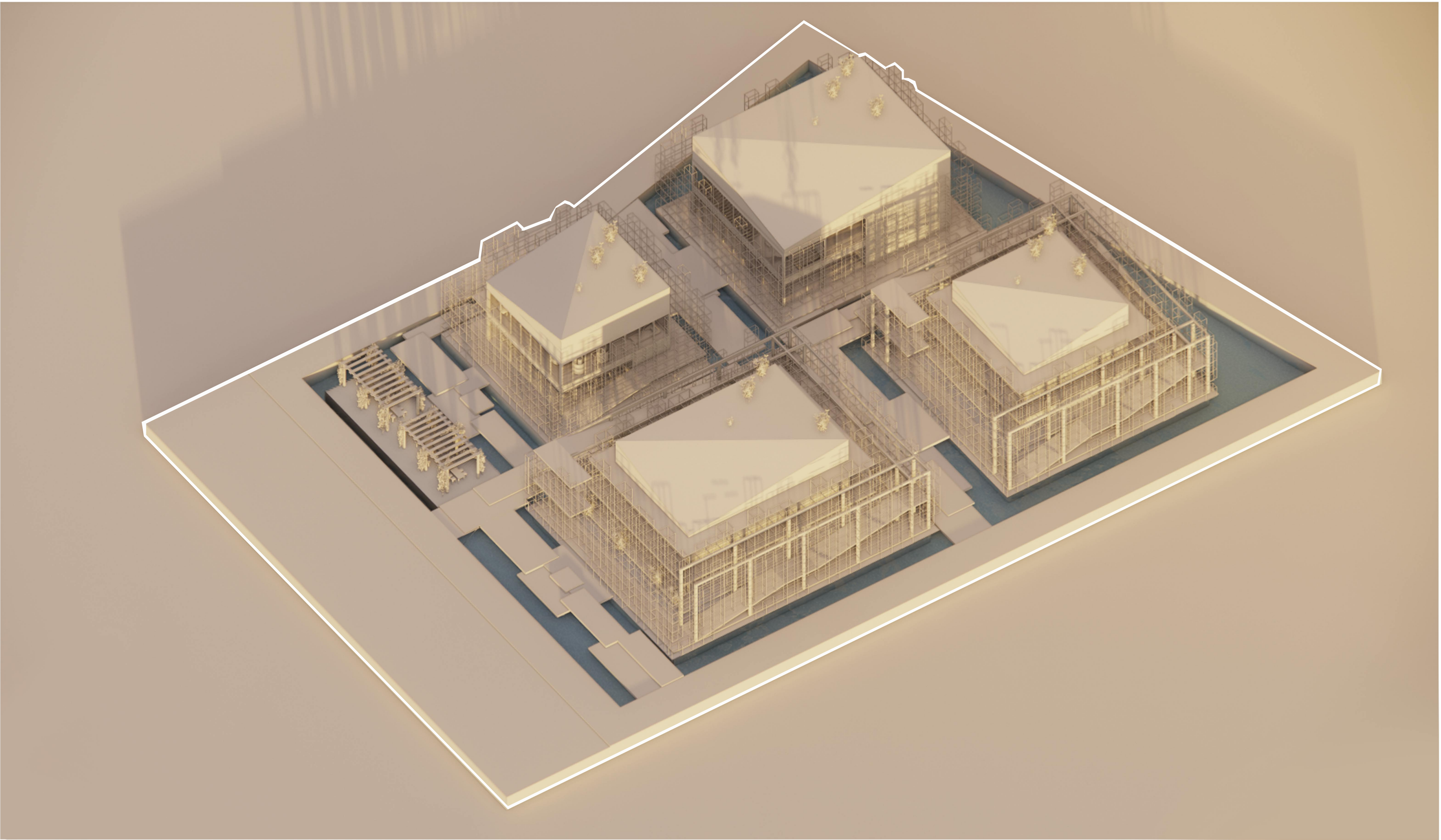
Wooden planks as outdoor corridor

Facade core B : Pseudo facade made out of recycled OSB

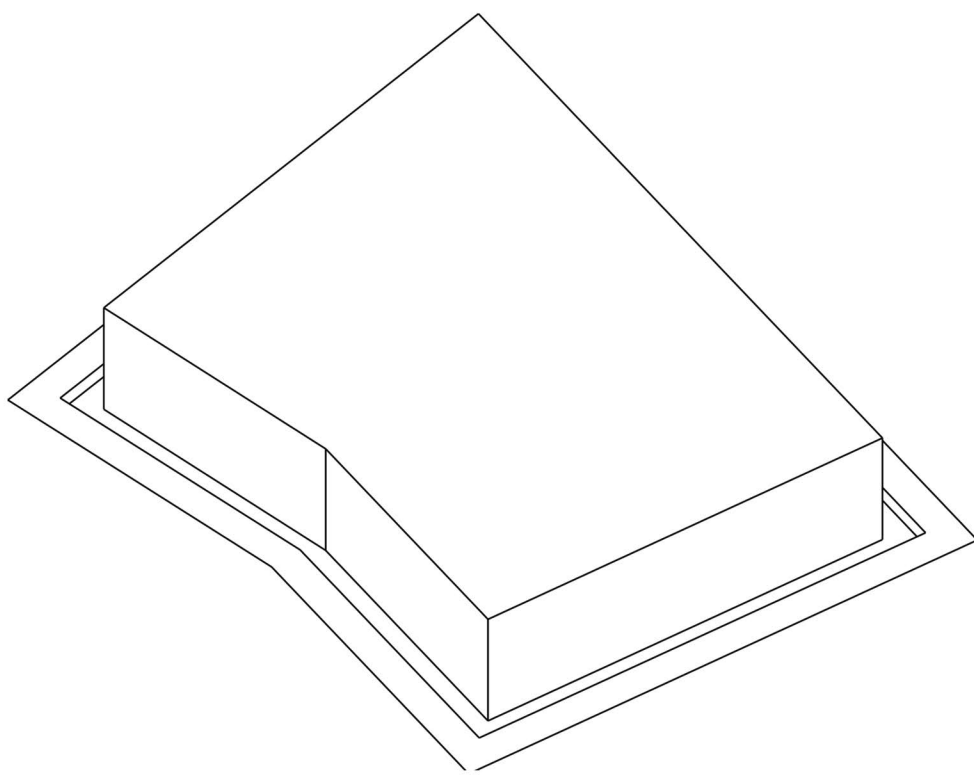
Ramway integrated vertical circulation

Facade core A : Pseudo facade made out of recycled OSB

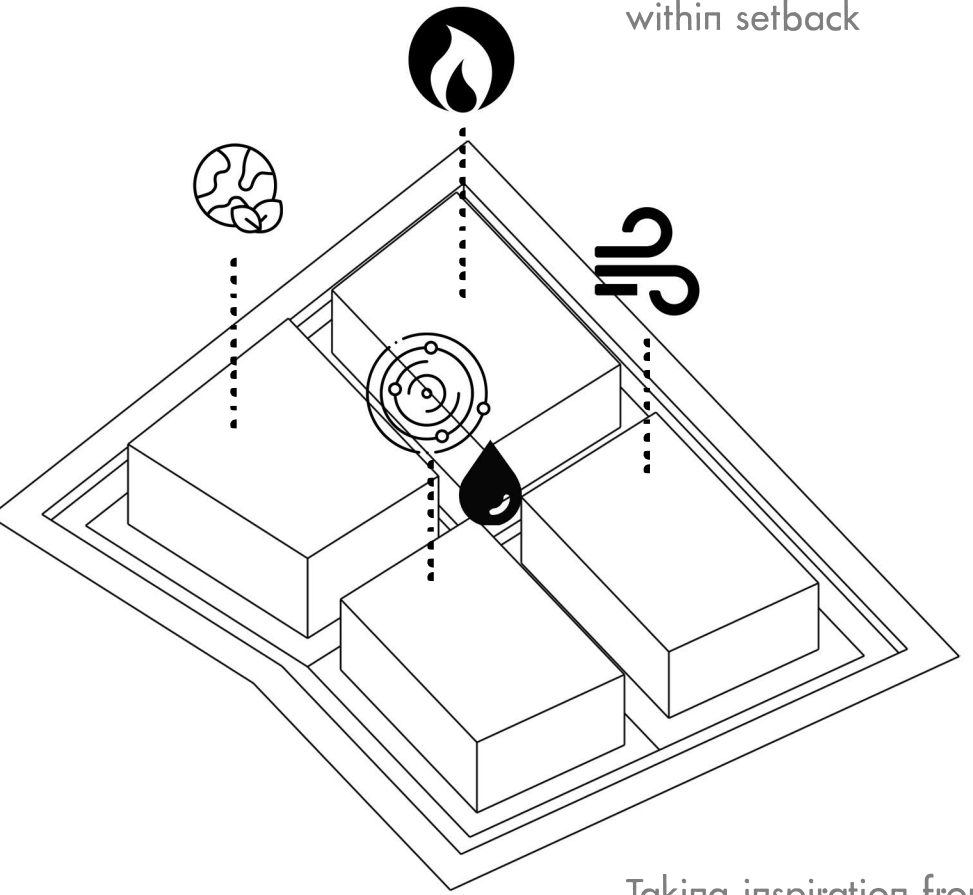
Interiors made out of materials resources locally



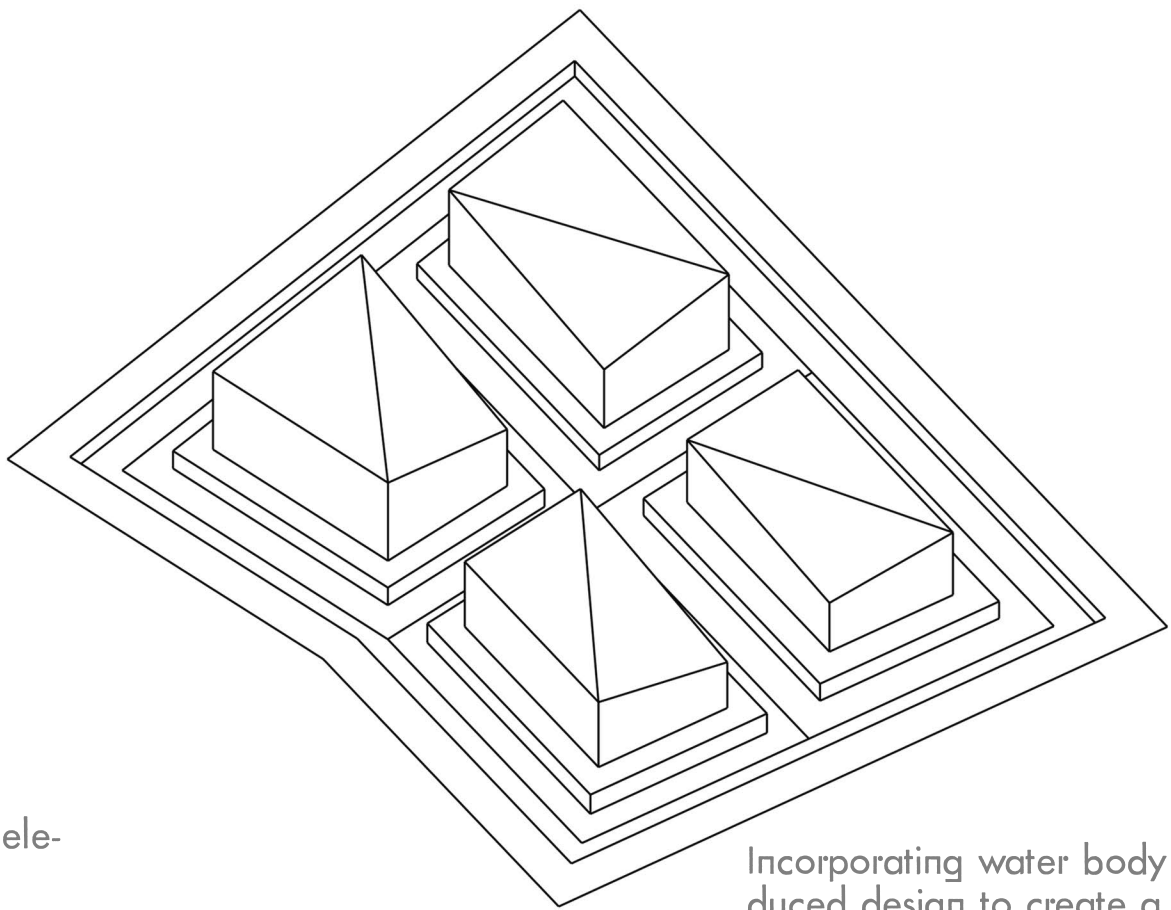
Demarcating permissible area within setback



Visualizing the core building footprint in the permissible area



Taking inspiration from the 5 elements of nature



Incorporating water body induced design to create a sense of island

